

# SOUTH AFRICA

## BIG CAT PHOTOGRAPHY WORKSHOP FEATURING

Lions, White Lions, *TIGERS*, Leopards & Cheetahs

11-DAY | 10-NIGHT



EXPEDITION TRAVELLERS

2024

# 2024

## SOUTH AFRICA BIG CAT PHOTOGRAPHY WORKSHOP



DEPARTURE DATE	PHOTOGRAPHY INSTRUCTOR	WORKSHOP FEE
SEPTEMBER 2 - 12, 2024	JOHAN SIGGESSION	\$13,900.00

\*\* PRICE IS BASED ON SINGLE OCCUPANCY (DAYS 1-7) AND SHARED OCCUPANCY (DAYS 8-10).

\*\*\* 20% DEPOSIT REQUIRED AT BOOKING



## **INCLUSIONS :**

- Airport Meet and Greet
- All Transportations and game drives in a 4x4 open safari vehicle for game viewing
- All domestic flights
- All Park entrance fees
- All Conservancy fees
- Accommodation and meals as per the itinerary
- A selected range of drinks (house wine, local beers and non-premium spirits)
- All activities as per the itinerary
- Services of an English-speaking driver guide
- 1 liter of local mineral water per person per day

## **EXCLUSIONS**

- International airfare to and from Johannesburg, South Africa
- Visa fees to South Africa, if applicable
- Any extras at the lodges, e.g., drinks, telephone costs etc.
- Tips and portorage fees
- Items of personal nature

## **NOTE**

- Rates are subject to change without prior notice
- Confirmation is subject to availability at the time of reservation
- In the event that the lodge/hotel quoted is not available at the time of reservation, an alternative lodge/hotel of the similar caliber will be provided
- 30% deposit is due on upon booking
- A 4% convenience fee will be charged if payment is made via credit card or wire transfer

# JOHAN SIGGESSON

Photography Instructor



A wildlife photographer from Sweden residing on the small Mediterranean island of Malta. From an early age, Johan was passionate about animals and the natural world. Before Animal Planet, Nat. Geo Wild and the likes, he was always guided in front of the weekly nature program on Swedish state television. No matter if it was lions in Africa, wolves in Yellowstone or Polar bears in Svalbard, Johan practically grew up with Sir David Attenborough's voice at the back of his head.

From the moment he bought his first digital camera, I was hooked. The creativity that is unleashed with instant feedback on the screen, variable ISO and more or less unlimited image capacity is something that really appeals to him. This, combined with a passion for animals, is a recipe for a wildlife photographer.

When he is not out photographing or stuck in front of his Mac processing images, Johan enjoys a good meal or watching a game of soccer with friends... and a cold beer. Johan hopes that you like viewing his images just as much as he enjoyed taking them!

In early 2019, Johan was one of the fortunate to be accepted into Sweden's most prestigious nature photography association called Naturfotograferna/N. A great honor!

# JOHAN SIGGESSON

Photography Instructor

## AWARDS AND PUBLICATIONS

- 2021: Book Publication: Marvellous Malta – Where Wild Orchids Grow
- 2021: Highly Commended WildArt Photographer of the Year (UK)
- 2021: Topaz Labs Award Winner – WildArt (UK)
- 2021: Founder’s Choice WildArt Photographer of the Year (UK)
  
- 2020: Honorable Mention Nature-Wildlife Category in Tokyo International Foto Awards
- 2020: Honorable Mention Nature Category in Moscow International Foto Awards
- 2020: 2 x Honorable Mention Nature Category in International Photo Awards (IPA)
- 2020: Honorable mention Fine Art Category in International Photo Awards (IPA)
- 2020: 7 x Finalist in GDT European Wildlife Photographer of the Year (GERMANY)
  
- 2019: Honorable mention in Memorial Maria Luisa (SPAIN)
- 2019: Bronze Medal in PX3 Prix de la Photographie, Paris (FRANCE)
- 2019: Elected into Swedish Nature Photography Association: Naturfotograferna/N
- 2019: 2 x Bronze Medal – Tokyo International Photo Awards
- 2019: 7 x Finalist in Asferico (ITALY)
  
- 2018: Moscow International Photo Awards – Silver Medal
- 2018: Category Winner in European Wildlife Photographer of the Year
- 2018: Top 15 and Top 25 placement in Malta International Photography Awards
- 2018: Group Exhibition with TPOTY London Bridge
- 2018: Group Exhibition with TPOTY Sintra, Portugal
- 2018: 7<sup>th</sup> in Peoples’ choice of Bird Photographer of the Year
- 2018: Double spread in Get Away Magazine (South Africa)
- 2018: Book feature Bird Photographer of the Year
- 2018: Double spread in the Guardian (UK)
- 2018: 11 x Finalist in Asferico (ITALY)
- 2018: Finalist in Nordic Nature Photography Competition (NNPC)
- 2018: Group Exhibition at Malta Natural History Museum

# ITINERARY





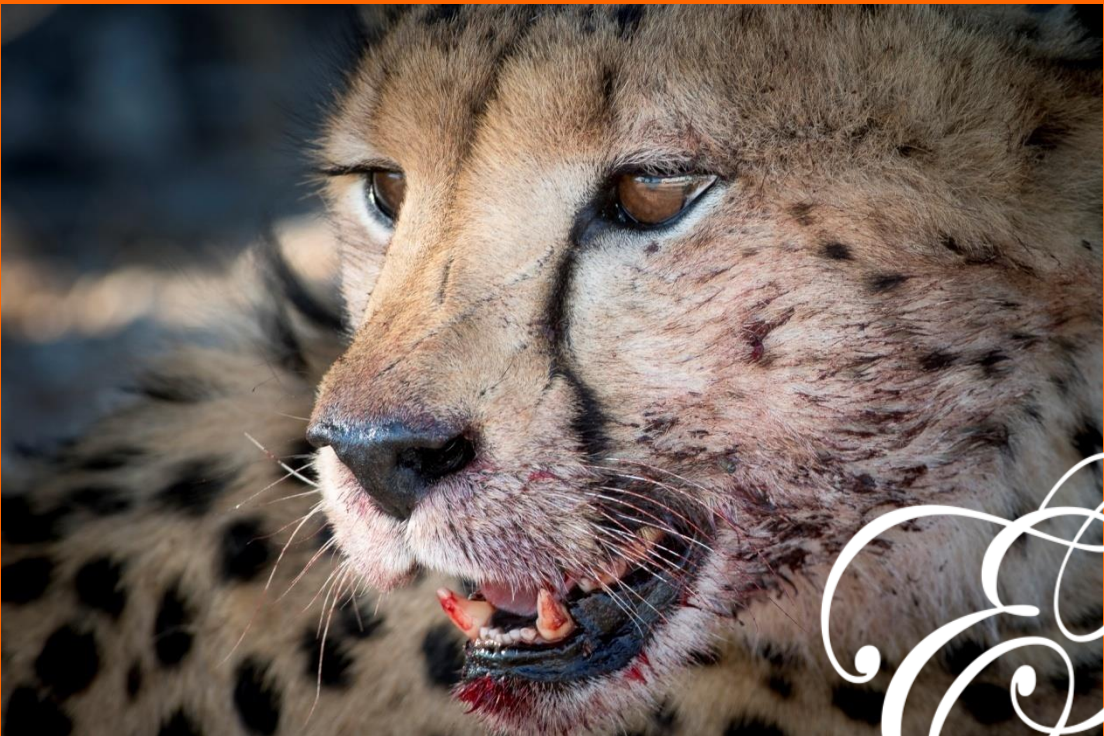
**EXPEDITION TRAVELLERS**

**Day 1 | September 2, 2024**

<b>Group Meeting Time</b>	7:30 a.m. on Arrival Date
<b>Group Meeting Place</b>	Terminal B, Airlink Check-in Counter. Please look for Expedition Travellers' Sign
<b>Lodge</b>	Inyati Game Lodge ( <a href="https://www.inyati.co.za/">https://www.inyati.co.za/</a> )
<b>Occupancy</b>	Single, Chalet Room
<b>Meals</b>	Lunch & Welcome Dinner
<b>Game Reserve</b>	Sabi Sand Nature Reserve
<b>Animal In Focus</b>	Lion, Leopard, and Cheetah
<b>You Will Also See</b>	Rhino, Elephant, Giraffe, Wild Dog, Hippo, Cape Buffalo, Zebra, etc.

**Activities**

- Airlink morning flight (10:05 a.m.) from Johannesburg (JNB) to Skukuza (SZK), then transfer to Inyati Game Lodge by car (approximately 1 hour 15 minutes).
- Arriving camp at around 1:00 p.m.
- Lunch | Briefing – Meet the group and the photography instructor
- Afternoon Game Drive with sundowner
- Welcome Dinner



## Day 2 | September 3, 2024

<b>Lodge</b>	Inyati Game Lodge ( <a href="https://www.inyati.co.za/">https://www.inyati.co.za/</a> )
<b>Occupancy</b>	Single, Chalet Room
<b>Meals</b>	Lunch & Welcome Dinner
<b>Game Reserve</b>	Sabi Sand Nature Reserve
<b>Animal In Focus</b>	Lion, Leopard, and Cheetah
<b>You Will Also See</b>	Rhino, Elephant, Giraffe, Wild Dog, Hippo, Cape Buffalo, Zebra, etc.

### **Activities**

- Morning snacks and refreshments before Game Drive
- Morning Game Drive
- Brunch
- Lunch | Early Afternoon Image Review – Photography Instruction Presentation
- Afternoon Tea before game drive
- Afternoon Game Drive with sundowner





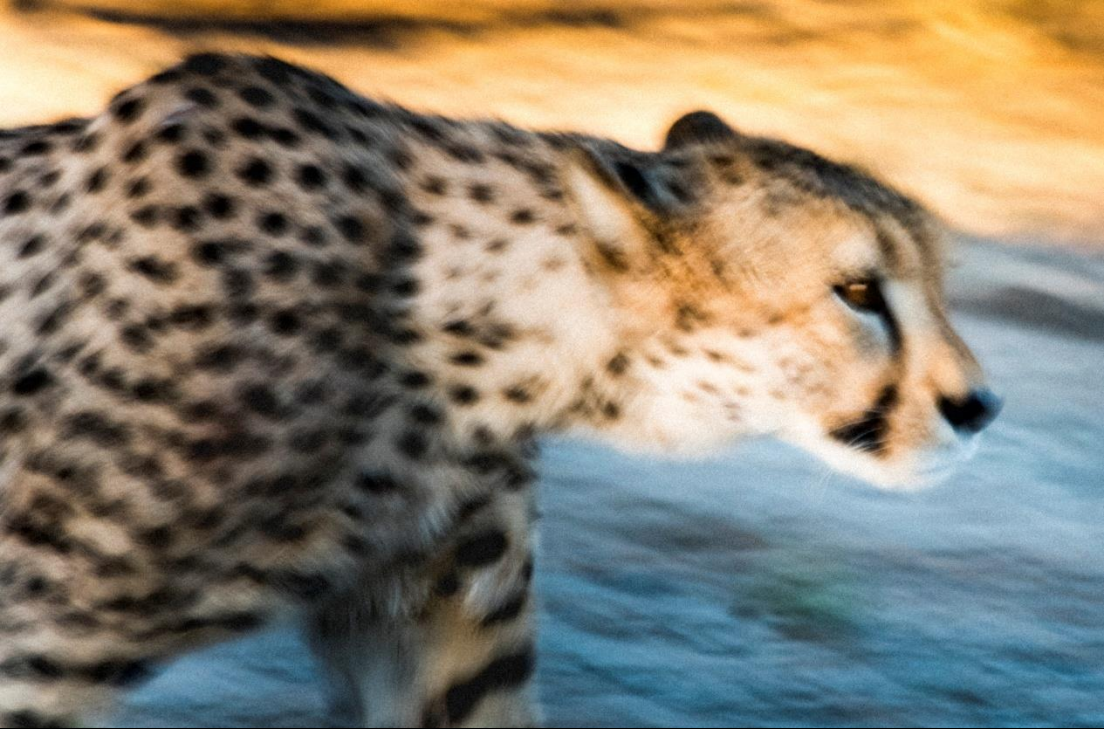
### **Day3 | September 4, 2024**

<b>Lodge</b>	Inyati Game Lodge ( <a href="https://www.inyati.co.za/">https://www.inyati.co.za/</a> )
<b>Occupancy</b>	Single, Chalet Room
<b>Meals</b>	Lunch & Welcome Dinner
<b>Game Reserve</b>	Sabi Sand Nature Reserve
<b>Animal In Focus</b>	Lion, Leopard, and Cheetah
<b>You Will Also See</b>	Rhino, Elephant, Giraffe, Wild Dog, Hippo, Cape Buffalo, Zebra, etc.

#### **Activities**

- Morning snacks and refreshments before Game Drive
- Morning Game Drive
- Brunch
- Lunch | Image Review – Review of Group Members' Works
- Presentation
- Afternoon Tea before game drive
- Afternoon Game Drive with sundowner





#### Day 4 | September 5, 2024

<b>Lodge</b>	Simbavati River Lodge <a href="https://www.simbavati.com/lodges/river-lodge/">(https://www.simbavati.com/lodges/river-lodge/)</a>
<b>Occupancy</b>	Single, Luxury Safari Tent, or Tented Pool Suite
<b>Meals</b>	Full Board
<b>Game Reserve</b>	Timbavati Private Nature Reserve
<b>Animal In Focus</b>	<b>White Lions</b> , Lions, Leopards, and Cheetah
<b>You Will Also See</b>	Rhino, Elephant, Giraffe, Wild Dog, Hippo, Cape Buffalo, Zebra, etc.

#### **Activities**

- Morning transfer by car from Inyati Game Lodge to Simbavati River Lodge by car (approximately 3 hours 45 minutes).
- Arriving camp at around noon
- Lunch | Group Discussion
- Afternoon Game Drive with sundowner
- Boma & Campfire Dinner



## **Day 5 | September 6, 202**

### **Lodge**

Simbavati River Lodge  
(<https://www.simbavati.com/lodges/river-lodge/>)

### **Occupancy**

Single, Luxury Safari Tent, or Tented Pool Suite

### **Meals**

Full Board

### **Game Reserve**

Timbavati Private Nature Reserve

### **Animal In Focus**

**White Lions**, Lions, Leopards, and Cheetah

### **You Will Also See**

Rhino, Elephant, Giraffe, Wild Dog, Hippo, Cape Buffalo, Zebra, etc.

### **Activities**

- Morning snacks and refreshments before Game Drive
- Morning Game Drive
- Brunch
- Lunch | Image Review – Review of Group Members' Works
- Afternoon Tea before game drive
- Afternoon Game Drive with sundowner



**Day 6 | September 7, 2024**

<b>Lodge</b>	Simbavati River Lodge ( <a href="https://www.simbavati.com/lodges/river-lodge/">https://www.simbavati.com/lodges/river-lodge/</a> )
<b>Occupancy</b>	Single, Luxury Safari Tent, or Tented Pool Suite
<b>Meals</b>	Full Board
<b>Game Reserve</b>	Timbavati Private Nature Reserve
<b>Animal In Focus</b>	<b>White Lions</b> , Lions, Leopards, and Cheetah
<b>You Will Also See</b>	Rhino, Elephant, Giraffe, Wild Dog, Hippo, Cape Buffalo, Zebra, etc.

**Activities**

- Morning snacks and refreshments before Game Drive
- Morning Game Drive
- Brunch
- Lunch | Lecture On Image Processing Technique
- Afternoon Tea before game drive
- Afternoon Game Drive with sundowner





**EXPEDITION TRAVELLERS**

**Day 7 | September 8, 2024**

**Lodge** City Lodge Hotel at OR Tambo International Airport  
(<https://clhg.com/hotels/152/City-Lodge-Hotel-OR-Tambo-International-Airport>)

**Occupancy** Single, Double Room

**Meals** Full Board

**Activities**

- Early Morning Game Drive
- Morning transfer to Hoedspruit Eastgate Airport (HDS) (1 hr 25 min)
- Fly from HDS to Johannesburg (JNB) (12:05 pm departure)
- Lunch at hotel
- Dinner at hotel



**Day 8 | September 9, 2024**

<b>Lodge</b>	Tigress Julie Lodge ( <a href="https://tigercanyon.com/lodge/">https://tigercanyon.com/lodge/</a> )
<b>Occupancy</b>	Shared, Luxury Suite
<b>Meals</b>	Full Board
<b>Game Reserve</b>	Tiger Canyon Private Game Reserve
<b>Animal In Focus</b>	<b>Tigers</b> , and Cheetah
<b>You Will Also See</b>	Aardwolf, Aardvarks, Servals, Caracals, Bat-Eared Foxes, Grey Mongoose, Springbok, Wild Horses, Blue Wildebeests, Warthogs, Baboons, Jackals, and Antelopes

**Activities**

- Morning flight from JNB to Bloemfontein Airport (BFN) (9:35 a.m. departure)
- Transfer by car from BFN to Tiger Canyon (approximately 2 hours 40 minutes)
- Lunch at Tigress Julie Lodge | Game Drive Briefing
- Afternoon Game Drive







**Day 9 | September 10, 2024**

<b>Lodge</b>	Tigress Julie Lodge ( <a href="https://tigercanyon.com/lodge/">https://tigercanyon.com/lodge/</a> )
<b>Occupancy</b>	Shared, Luxury Suite
<b>Meals</b>	Full Board
<b>Game Reserve</b>	Tiger Canyon Private Game Reserve
<b>Animal In Focus</b>	<b><i>Tigers</i></b> , and Cheetah
<b>You Will Also See</b>	Aardwolf, Aardvarks, Servals, Caracals, Bat-Eared Foxes, Grey Mongoose, Springbok, Wild Horses, Blue Wildebeests, Warthogs, Baboons, Jackals, and Antelopes

**Activities**

- Morning snacks and refreshments before Game Drive
- Morning Game Drive
- Brunch
- Lunch | Image Review – Review of Group Members' Works
- Afternoon Tea before game drive
- Afternoon Game Drive with sundowner



**Day 10 | September 11, 2024**

<b>Lodge</b>	Tigress Julie Lodge ( <a href="https://tigercanyon.com/lodge/">https://tigercanyon.com/lodge/</a> )
<b>Occupancy</b>	Shared, Luxury Suite
<b>Meals</b>	Full Board   Farewell Dinner
<b>Game Reserve</b>	Tiger Canyon Private Game Reserve
<b>Animal In Focus</b>	<b><i>Tigers</i></b> , and Cheetah
<b>You Will Also See</b>	Aardwolf, Aardvarks, Servals, Caracals, Bat-Eared Foxes, Grey Mongoose, Springbok, Wild Horses, Blue Wildebeests, Warthogs, Baboons, Jackals, and Antelopes

**Activities**

- Morning snacks and refreshments before Game Drive
- Morning Game Drive
- Brunch
- Lunch | Final Image Presentation – Group Members
- Afternoon Tea before game drive
- Afternoon Game Drive with sundowner
- Farewell Dinner
- Night Drive – Stargazing



Angara



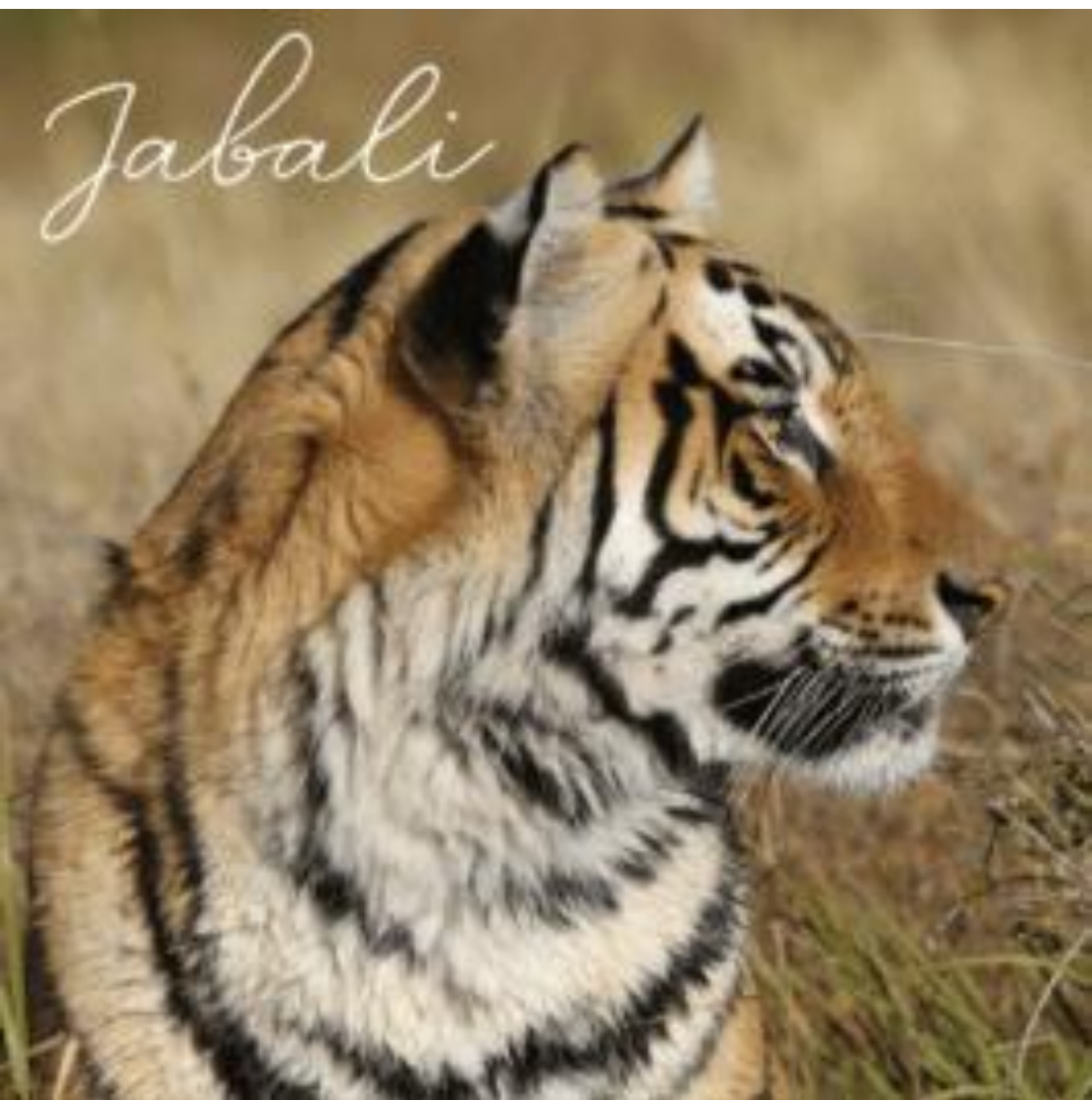
**Day 11 | September 12, 2024 | END OF SERVICES**

**Meals** Breakfast & Packed Lunch

**Activities**

- Morning Game Drive
- Transfer to Bloemfontein Airport (BFN) (2 hours and 40 minutes)
- Packed Lunch during the drive to BFN
- Flight to Johannesburg (JNB) (2:05 p.m. departure)
- Arriving JNB at 3:05 p.m.
- End of Services

*Jabali*



# HOTEL INFORMATION



EXPEDITION TRAVELLERS

# Inyati Game Lodge



# Simbavati River Lodge



# Tiger Canyon



# TERMS AND CONDITIONS



EXPEDITION TRAVELLERS

**1.CONTRACTING PARTIES**

These Terms and Conditions are legally binding between the travelers and Expedition Travellers (hereinafter referred to as “ET”).

**2.ACCEPTANCE OF THESE TERMS**

PLEASE NOTE: Acceptance of a quotation from ET constitutes acceptance of these Terms and Conditions that take effect as soon as ET issues you confirmation.

**3.ACCOMMODATION:**

All accommodation, room type(s), and specifications are as shown in the itinerary.

**4.MEALS:**

Meals are as shown in the itinerary.

**5.TRANSFERS:**

Transfers are provided on arrival and departure from airport to hotel and return where specified in the itinerary.

**6.ITINERARY:**

Accommodation and arranged sightseeing are subject to change at any time due to unforeseen circumstances or circumstances beyond ET’s control. Every effort will be made to operate tours as planned. Still, alterations may occur after the final itinerary has been issued. ET also reserves the right to withdraw a tour or any part of it. To make such alterations to the itinerary or the tour inclusions as it deems necessary or desirable, and to pass on to tour members any expenditures or losses caused by delays or events beyond its control. In the event of any appreciable variation in the tour price due to these circumstances, ET reserves the right to adjust to the tour costs as necessary.

**7.SPECIAL REQUESTS:**

At the time of booking, if there is any specific requests, they should be aware of to ET. Please note that ET will make every effort possible to secure the special requests; however, ET cannot guarantee the result.

**8.TRANSPORTATION:**

Transportation will be as specified in the itinerary.

**9.BAGGAGE:**

ET provides handling of baggage only as specified in the quotation. Weight restrictions for baggage on some routes on internal/domestic flights may apply, pre-tour documents will provide details. Baggage and personal effects are at the owner’s risk throughout the tour, and ET assumes no liability for lost or damaged baggage. ET strongly advises taking Baggage insurance. Please check with your international carrier for other baggage restrictions applicable to your international flight.

**10.TAXES AND GRATUITIES:**

Hotel taxes as imposed by city and state governments are included. Airport taxes are included where specified in the itinerary. Gratuities for guides, drivers, porters, camp staff, ship crew, and Tour Managers are not included. They are at the discretion of the Travelers unless otherwise stated in the itinerary.



**11.EXCLUSIONS:**

Unless they are expressly specified in the tour description, the cost of obtaining passports, visas, excess baggage charges, items of a personal nature such as drinks, laundry, telephone calls, fax charges are not included in the tour price.

**12.PRICES & ARRANGEMENTS:**

The tour price includes planning, handling, and operational charges and is quoted based on the current exchange rate and tariffs. Entrance fees as part of scheduled sightseeing tours are also included in this price. This price is subject to revision in line with significant changes in foreign currency, tariff rates, taxes etc.

**13.PHOTOGRAPHY:**

ET reserves the right to take photographs during any program or part thereof and use them for promotional purposes. By booking a program with ET, Travelers agree to allow their images to be used in such photographs. Travelers who prefer that their images not be used are asked to identify themselves to ET before final payment. They will be exempted from this photography waiver clause.

The use of drones for photography, or any other purpose, is forbidden on any ET trip unless permission has been previously sought, and granted by, ET.

**14.DESCRPTIONS AND IMAGERY**

All photographs, images, and descriptions used by ET online and within promotional documentation have been included to present a true and accurate reflection of your holiday destination. However, due to circumstances beyond our control, it is foreseeable that some destinations will change in appearance throughout the year. They appear to have varied at the time of your stay, for instance, due to adverse weather. ET will make every attempt to notify you in advance of your trip about whether such case affected the accommodation or its surroundings. If we are made aware of the same, we cannot be held liable in this regard.

**15.SURVEILLANCE AND SECURITY**

Please note that they may have installed surveillance cameras and security equipment in some properties. They may have the capability to monitor or record images and/or sound via remote control. If you have any concerns or issues with this, you must inform our team before your trip.

**16.ACTIVITES**

ET may pre-book some activities. However, should you wish to participate in other or additional activities, we strongly advise that you book in advance to avoid disappointment. Some activities, most notably boating and water-related, are subject to weather and water levels. ET cannot be held responsible should such activities be amended and/or cancelled due to such matters, over which ET has no control.

**17.REGISTRATION:**

A refundable deposit is required at the time of booking. The deposit amount will be specified at the time of booking; however, it usually is 10% of the tour price. The remainder of the tour cost is payable on the date shown on your quotation, typically 90 days before departure. If the reservation is made after this date, you must pay the entire tour price at the time of confirmation.

## **18. PAYMENT METHOD:**

You may make payment with the following methods:

- Credit card
- Cheque
- Bank transfer

ET cannot guarantee that it will accept all payment methods. ET will advise of the most suitable payment method at the time of deposit. A 4.00% convenience fee will be charged if payment is made by credit card or bank transfer.

18.1 Travelers are liable for all bank and related transaction charges.

## **19. CANCELLATION:**

All cancellations must be received in writing by your ET Tour Consultant.

19.1.1 Unless otherwise specified in your quotation, the following cancellation terms will apply to your booking:

19.1.2 Cancellations received between the date of booking and 91 days before departure will result in the loss of the deposit.

19.1.3 Cancellations received 59 - 30 days before departure will be subject to a cancellation charge of 30% of the tour price.

19.1.4 Cancellations received 29 – 14 days before departure will be subject to a cancellation charge of 50% of the tour price.

19.1.5 Cancellations received 13 - 0 days before departure will be subject to a cancellation charge of 100% of the tour price.

19.2 Cancellation of airline tickets will be subject to the refund policy of each airline. It may be greater than the percentages above, particularly when low-cost-based fares are used.

19.3 Purchasing of special event tickets is subject to the refund policy of each event. Please refer to the specific event policy for details.

19.4 ET reserves the right to charge penalties, fees, and losses incurred due to cancellation.

## **20. CANCELLATIONS BY ET**

We reserve the right to cancel your holiday for any reason. However, we will not cancel your hotel arrangement less than 60 days before your departure date except for reasons of force majeure or failure by you to pay the final balance. Suppose you must pay the holiday price balance at least 60 days before departure. In that case, ET will treat your booking as canceled and levy the cancellation charge in clause 19. Suppose ET is obliged to cancel your holiday in any other circumstances before departure. In that case, ET will use its best endeavors to offer alternative arrangements of equivalent or very closely similar travel arrangements and a refund of the price difference; or will give you a full and prompt refund of all monies paid.

## **21. FORCE MAJEURE**

21.1 Force majeure means unusual and unforeseeable circumstances beyond ET's control or the control of our suppliers. The consequence of which neither ET nor its suppliers could avoid even with all due care, including, but not limited to, war, the threat of war, riot, civil strife, terrorist activity (actual or threatened), industrial dispute, unavoidable technical problems with transport, machinery or equipment, power failure, changes imposed by rescheduling or cancellation of

flights by an airline, natural or nuclear disaster, fire, flood, drought, adverse weather conditions, epidemics or pandemic outbreaks of illness, and level of water in rivers, etc.

21.2 In the event of a cancellation or material alteration to the trip as a result of the circumstances as described in this clause, ET may, in their sole and absolute discretion:

a) offer the Traveler(s) alternative travel arrangements or products of comparable standard as may be appropriate in the circumstances; or

a) suppose ET does not offer alternative travel arrangements or products. In that case, ET will make a prompt proportional refund of monies paid by the Traveler.

21.3 ET may charge a reasonable fee to cover the administration costs of providing alternative travel arrangements or products.

## **22. CLAIMS AND REFUNDS:**

Refunds are not made for any missed services except for verifiable extenuating circumstances.

Please see our LIMITS ON EXPEDITION TRAVELLERS' RESPONSIBILITY clause below. For verifiable claims to be considered, they must be received in writing within 30 days of the program's termination. Any adjustment considered will be based on the actual price of the services involved and not on a per diem basis. Adjustments will not be made for unused sightseeing trips or meals. ET will not accept any liability for any claims not received within 30 days of the termination of your program. All claims for days missed while traveling should be made in writing within 30 days of the program. Any payment made by ET, either by way of refund or as the result of a successful claim, will be limited to, and not exceed, the sums retained by ET regarding the related booking.

## **23. LIMITS ON EXPEDITION TRAVELLERS' RESPONSIBILITY:**

Expedition Travellers, its employees, shareholders, officers, directors, successors, agents, and assigns (collectively "ET"), do not own or operate any entity which is to or does provide goods or services for your trip. It purchases transportation (by aircraft, coach, train, vessel, or otherwise), hotel and other lodging accommodations, restaurants, ground handling, and other services from various independent suppliers (including, from time to time, other affiliated Expedition Travellers companies). All such persons and entities are independent contractors. As a result, ET is not liable for any negligent or willful act of any such person or entity or of any third person.

In addition and without limitation, ET is not responsible for any injury, financial or physical loss, death, inconvenience, delay, or damage to personal property in connection to the provision of any goods or services, whether resulting from but not limited to acts of God or force majeure, illness, disease, acts of war, civil unrest, insurrection or revolt, animals, strikes or other labor activities, criminal or terrorist activities of any kind, overbooking or downgrading of services, food poisoning, mechanical or other failures of aircraft or other means of transportation or for the failure of any transport mechanism to arrive or depart on time.

There are many inherent risks in adventure travel of the type involved here, leading to illness, injury, or even death. These risks are increased because these trips occur in remote locations, far from medical facilities.

If you decide to participate in any activities including, but not limited to, any excursions involving animals, riding on animals, SCUBA diving, snorkeling, boating, hot air ballooning, zip-lining, high altitude treks, climbing, quad biking, parasailing, parachuting, kayaking, white-water rafting,

primate tracking and any activity which ET considers to carry inherent risks of serious illness, injury, or death (“Activities”), then you fully understand and acknowledge that Activities carry with them various inherent risks, including serious illness, injury, or death. You take complete responsibility for your own health and safety and agree to assume all risks of injury, illness, or death, whether foreseen or unforeseen, that may befall you as a result of participating in any Activities and agree to release ET and its affiliates, their agents, employees, and representatives from any liability whatsoever related thereto, to the fullest extent permitted by law.

Further, as consideration for being permitted to participate in the Activities, you release ET, whether known or unknown, from and agree not to sue or make a claim against ET for property damage, cancellation of any activities for any reason, illness, negligent rescue operations or procedures, personal injury or death arising from your participation in the Activities, and any activity related thereto, including transportation to and from the site of the Activities, regardless of whether such property damage, illness, personal injury, or death results from the negligence of ET (but not its reckless, willful, or fraudulent conduct) and/or from any defect in the equipment. You further agree to indemnify and hold ET harmless for any claim made against ET by anyone else that a) related to your participation or b) would be subject to the above release and covenant not to sue if you had made this claim directly yourself.

#### **24.HEALTH PRECAUTIONS:**

Before travel, please consult your physician about anti-malaria precautions and other inoculations and vaccinations. Where applicable, please ensure that you carry a valid Yellow Fever certificate while traveling.

#### **25.TRAVEL ADVISORIES/WARNINGS:**

Travelers’ responsibility is to become informed about the most current travel advisories and warnings by referring to their respective government agencies. In the event of an active State Department or government agency Travel Warning against travel to specific destinations, should the Traveler still choose to travel against any travel advisory or warning, the Traveler assumes all risk of personal injury, death or property damage that may arise out of the events like those advised or warned against.

#### **26.TRAVELERS’ REPRESENTATIONS:**

If you or any member of your party has any medical problem or disability that may affect your stay, please provide us with full details before confirming your booking to advise you on the suitability of your chosen arrangements. We may require you to produce a doctor’s certificate certifying that you can participate in the tour. Acting reasonably, we will not confirm your booking if we cannot adequately accommodate the person’s needs. Suppose you did not give us full details at the time of booking. We will cancel it and impose applicable cancellation charges when we become aware of these details.

#### **27.AIR TRANSPORTATION:**

**AIR TRANSPORTATION:** Airlines concerned are not to be held responsible for any act, omission, or event occurring while passengers are not on board their aircraft. International air carriers are also subject to international air conventions limiting their liability. These limitations of liability are explained on the e-ticket or the reverse of the airline ticket. When issued, this constitutes the sole contract between the respective air carrier(s) and their passengers.

Airlines overbook all flights! Therefore, we recommend that you check in online as soon as the airline makes online check-in available. If you do not book online or cannot, we recommend that you arrive at the airport **3 hours** before departure. Airlines

may re-allocate seats in the event of late check-in and arrivals. ET cannot check you in, and you must ensure you are checked in within the appropriate time. ET is neither responsible nor liable if you are downgraded an airline class due to the airline overbooking the class in which you are booked. Seat reservations are at the airline's discretion and may be changed at any time without notice.

**CRUISES/CHARTERS:** If you are scheduled to partake in a cruise or charter, you are responsible for ensuring that you are aboard the vessel 60 minutes before the scheduled sailing time. ET is neither responsible nor liable if you fail to board the vessel in good time and suffer any loss. Furthermore, refunds will not be given for any missed days due to such failure or for clients who leave the Cruise prematurely.

#### **28.PASSPORTS & VISAS**

Please note that passport holders are responsible for obtaining the required documentation applicable for entry. Please also note that passports must be valid for at least six (6) months after the completion of your journey and should have sufficient blank pages for visas and immigration stamps. ET can only be held responsible if you are allowed entry to a country due to non-compliance with these requirements. Should you require specific information ahead of travel, please consult the travel advice produced by the government of your home jurisdiction and that of the government that issued the passport and/or visa you intend to travel under.

#### **29.TRAVELLING WITH CHILDREN**

We recommend that if you are traveling with a child that does not share your surname, to minimize the possibility of disruption to your travel plans, you travel with documentation that proves your relationship to the child and that proves you have permission to travel with them. ET can only be held responsible if you or any member of your traveling party are allowed entry to a country due to non-compliance with these requirements. Should you require further specific information ahead of travel, please consult the travel advice produced by the government of your home jurisdiction and that of the government that issued the passport and/or visa you intend to travel under.

Due to some of the excursions and activities involved in ET trips, minimum age requirements are in place at some destinations. Some accommodations require children below a certain age to share a room with an adult. Such circumstances vary and will be specified within your itinerary, ahead of travel, and at the time of booking.

#### **30.TRAVEL INSURANCE:**

ET requires all clients to take out comprehensive travel insurance before the travel date. This insurance should cover cancellation and curtailment, all medical expenses, including evacuation/repatriation, **COVID-19 coverage**, personal baggage, personal liability, death, and permanent disability, and travel document insurance.

#### **31.ARBITRATION AGREEMENT:**

Any claim arising out of or relating to these Terms and Conditions, to the Limits on ET's Responsibility clause, to the brochure, to any information relating in any way to the trip, to the trip itself, or any products or services related to the trip, shall be settled in the first instance by binding arbitration in the applicable legal forum as detailed in clause 32 of these Terms and Conditions. In lieu of a personal appearance at arbitration, the arbitration may be conducted by telephonic means. Arbitration is the exclusive forum in the first instance for dispute resolution and except as otherwise provided by statute, each party shall bear its costs and expenses and an equal share of the arbitrator and administrative fees.

**32. APPLICABLE LAW AND FORUM:**

This agreement shall be construed, interpreted, enforced by, and governed by the laws of the State of New York, The United States of America. It is agreed between ET and the Travelers that all lawsuits against ET arising under, in connection with, or incidental to the tour shall be filed, if at all, in the courts of Queens County, State of New York, The United States of America to the exclusion of the courts of or in any other country.



**EXPEDITION TRAVELLERS**



## EXPEDITION TRAVELLERS

Experiencing World's Most Endearing Moments!

<https://expeditiontravellers.com/>

[info@expeditiontravellers.com](mailto:info@expeditiontravellers.com)



In Collaboration With



SIMBAVATI  
LODGE COLLECTION

