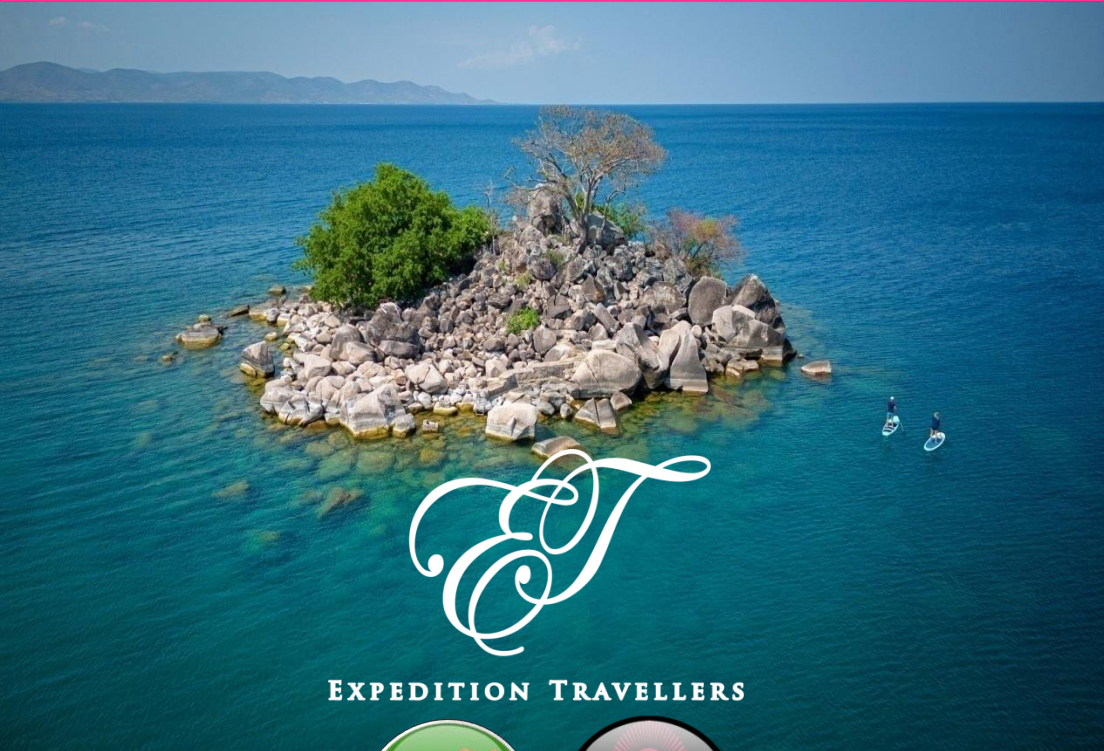


SOUTHERN AFRICA

WELLNES & CULINARY TOUR By Private Chartered Flights

12-DAY | 11-NIGHT



EXPEDITION TRAVELLERS



2023

Welcome to SOUTHERN AFRICA



Southern Africa is the southernmost subregion of the African continent, south of the extensive Congo River basin. Southern Africa has numerous river systems: the most prominent being the Zambezi River. The region is generally drained eastward toward the Indian Ocean.

In this tour, we follow the mighty Zambezi River from Zimbabwe to Zambia and will end the trip in Malawi. You will witness the magnificent Victoria Falls and have some of the best safari experiences, watching animals migrating from one water system to another. You can also get close to the animals and nature through the safari walks, game drives, or from the deck of your luxury tents. You will stay at some of the best luxury camps in Southern Africa and enjoy the wellness, and culinary programs Expedition Travellers has prepared for you.

This Wellness and Culinary Tour is all about relaxation and pampering yourself. You will have the ability to self-design the itinerary at each camp we visit. The Expedition Travellers Complimentary Spa Package will help you relax, recover from the long flight and help you ease the jet lag. The yoga and meditation sessions will relax your mind and sharpen your senses while creating mental clarity and calmness, thus, increasing your energy and strength to enable you to enjoy the tour even further. The carefully curated culinary program is designed to enhance your Southern African experience. The Executive Chefs at the camps are some of the most talented and skilled chefs who integrate traditional Southern African cuisines with their creativities, blending in the new and the old. The dishes will show you a different perspective of Southern African cooking.

Enjoy, and Welcome to Southern Africa!

DATES & PRICE

November 20 – December 1, 2023

US\$23,500.00/pp

Prices are per person based on Single occupancy.

GROUP SIZE

Limited to 6 people

INCLUSIONS

- English-Speaking Local Guides / Driver
- Hand-Selected Luxury Accommodations (*Single Occupancy*)
- Airport meet and greet with private luxury coach
- Round-Trip Airport Transfers
- *Chartered Flights* connecting the resorts
- All Meals (breakfast, lunch & dinner)
- *Tea, coffee, soft drinks, and alcoholic beverage, except premium imported spirits and champagne*
- *Welcome Dinner* overlooking the magnificent Zambezi River
- *Farewell Dinner* with live music
- *Three (3) spa treatments of your choice during the tour*
- *Live cooking demonstration*
- *Early morning Yoga & Meditation sessions*
- *Sundowner cruises*
- All park entrance fees, VATs, and All Gratuities Except for Guide/Driver
- *Laundry Services*
- Local Bottled water
- Portage at the airport
- 24/7 ET On-Call Support

EXCLUSIONS

- Roundtrip International flight to Livingstone, Zambia, and from Lilongwe, Malawi
- Visa application and fees
- Cancellation / Travel Insurance and/or Medical Insurance with COVID-19 coverage
- Any meals, transfers, or tours that are not mentioned in the itinerary
- Alcoholic beverages and soft drinks, unless it is mentioned in the itinerary
- Early check-in and late check-out
- Any item of a purely personal nature, such as laundry and telephone bills
- Gratuities for Driver/Guide



EXPEDITION TRAVELLERS

PLEASE NOTE ...

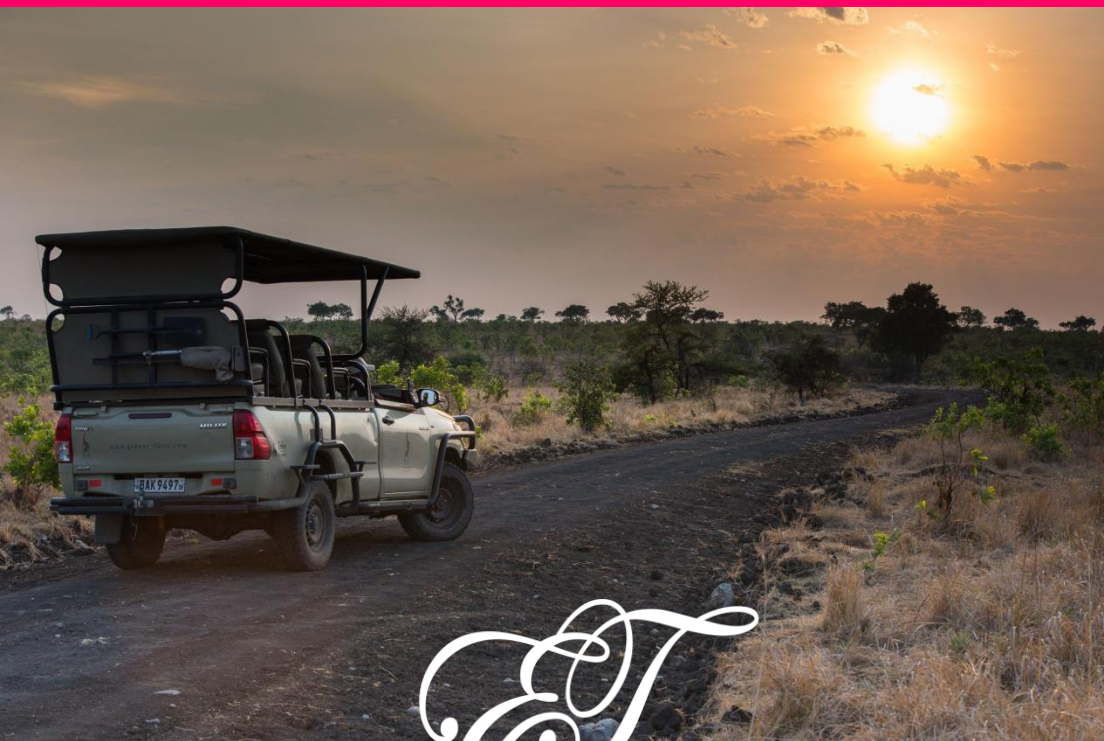
- Quotation is based on Six (6) people traveling on a **Single Occupancy** basis
- Accommodation is subject to availability, and reservations have not been made unless otherwise stated
- Visa fees and entry/exit requirements are subject to change at short notice, which may result in additional fees or new visa applications to be covered by the guest
- A non-refundable deposit of 10% is required at the time of booking, with the remaining balance due 60 days before departure; if the reservation is made within 60 days of departure, the total costs must be paid at the time of confirmation
- Payments may be made by check, wire transfer, or credit card. A wire transfer/credit card service charge of 4% will be added to the total cost
- Bank transfer payments must be confirmed by email on the date payment is made, and travelers are liable for all bank (and related) transaction charges
- If you are traveling with more than one valid passport, please present the passport corresponding to the details listed on any pre-arranged visa documents (E-Visas, Visa Stamps, or Visa Approval Letters) while checking in at the airline counter before departure. Expedition Travellers Namibia does not take responsibility for any issues that may occur as a result of failing to present the correct passport; any fee or fine incurred as a result must be settled directly by the guest

Gratuities are at the sole discretion of each client. However, in Southern Africa, it is customary to offer gratuities to guides and drivers to appreciate the services provided. Recommended tipping amounts are provided below. Upon advance request, ET can add a pre-arranged gratuity package as a part of the total trip cost. ET distributes the gratuities on your behalf, ensuring that service providers receive a fair and equal amount throughout your journey.

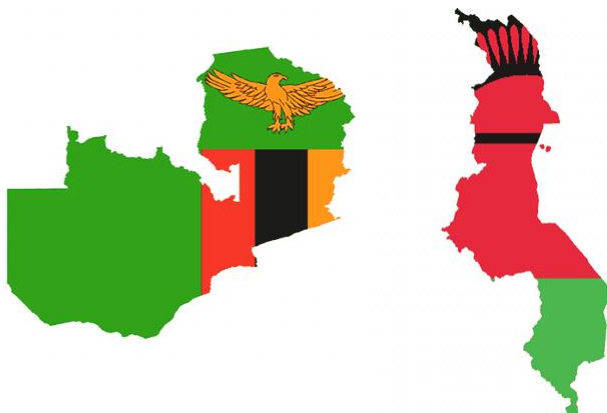
Guide/Driver

US\$15//day/per person

ITINERARY



EXPEDITION TRAVELLERS





Day 1	Mon., November 20, 2023
Meeting Point	Harry Mwanga Nkumbula International Airport (LVI) in Livingstone, Zambia Arrival Hall – Please look for Expedition Travellers Sign
Meeting Time	1:30 pm on Arrival Date
Hotel	Tongabezi Lodge (https://greensafaris.com/tongabezi/)
Meal	Welcome Dinner

ARRIVE AT VICTORIA FALLS, ZAMBIA | WELCOME TO ZAMBIA

Upon arrival at the Harry Mwanga Nkumbula International Airport (LVI) in Livingstone, Zambia, Expedition Travellers representatives will meet and greet you at the arrival hall. Please look for Expedition Travellers Sign at the arrival hall. The group meeting time is at 1:30 pm on the arrival date. Once all luggage is collected, you will board our luxury coach vehicle and transfer to Tongabezi Lodge in Zambia.

Upon arrival, you are welcome to explore the resort property. Today is at leisure. Please take advantage of Expedition Travellers' complimentary spa package. You may choose ONE of the following spa treatments at any time during your stay at Tongabezi:

- Detox Massage (60 Minutes)
- Tonga Traditional Massage (90 Minutes)
- Deep Tissue Massage (90 Minutes)
- Full Body Exfoliation (45 Minutes)
- Relaxing Back and Neck Massage + Hand and Foot Revival (75 Minutes)
- Relaxing Full Body Massage (60 Minutes)

Tonight, enjoy the Welcome Dinner on the deck of Tongabezi overlooking the magnificent Zambezi River.



EXPEDITION TRAVELLERS

Day 2	Tue., November 21, 2023
Hotel	Tongabezi Lodge (https://greensafaris.com/tongabezi/)
Meal	B, Lunch on Livingstone Island & Dinner on the Look Out Deck

VICTORIA FALLS

After breakfast, visit the mighty Victoria Falls on the Zambian side and Mosi-oa-Tunya National Park. You will have an entire day to explore the area. You may participate in the organized **Tour of the Falls** on the Zambian side, followed by a **Tour of Livingstone Island**. Follow in Dr. David Livingstone's footsteps as you tour the island, hear about its history, experience luxury dining, and soak up the sights. You can even swim in Angel or Devil's Pool on the very edge of the waterfalls.

Lunch will be served on Livingstone Island.

While in the area, there are many optional activities (self-paid) for you to do during the day:

- Horseback Riding (2 Hours) US\$85.00
- Helicopter Flight (18 - 20 Minutes) US\$271.00
- Quad Bikes (2.5 Hours) US\$140.00
- White Water Rafting (Half Day PM) US\$110.00

We have arranged a **private dinner** on the exclusive **Look Out Deck** overlooking the falls. After dinner, return to the lodge for a good night's sleep.



Day 3	Wed., November 22, 2023
Hotel	Tongabezi Lodge (https://greensafaris.com/tongabezi/)
Meal	B, Lunch on the Dhow Boat&Private Dinner at the Garden House

ZAMBEZI RIVER

Enjoy a *sunrise yoga and meditation session*, followed by a full breakfast. This morning is at leisure. If you have not taken advantage of ET's complimentary spa package, it is a good time to enjoy it.

Lunch will be served on the *dhow boats* (2 boats) while sailing up the Zambezi River. In the late afternoon, enjoy a *sundowner with snacks* on the *Zambezi River's sandbar (a private island)*.







Day 4 **Thu., November 23, 2023**
Hotel Ila Safari Lodge (<https://greensafaris.com/ila/>)
Meal B, L, D

KAFUE NATIONAL PARK

After breakfast, transfer to Ila Safari Lodge by a chartered flight in time for lunch at Ila Safari Lodge. Afternoon optional ***Bush Walks*** with a knowledgeable guide and an armed scout that immerses you in Kafue’s beautiful and biodiverse landscape. Alternatively, you can dip in the rim flow infinity pool while enjoying stunning views of the Kafue River and bush beyond.





EXPEDITION TRAVELLERS



Day 5	Fri., November 24, 2023
Hotel	Ila Safari Lodge (https://greensafaris.com/ila/)
Meal	B, Lunch on the e-Boat, Dinner on the Deck

KAFUE NATIONAL PARK

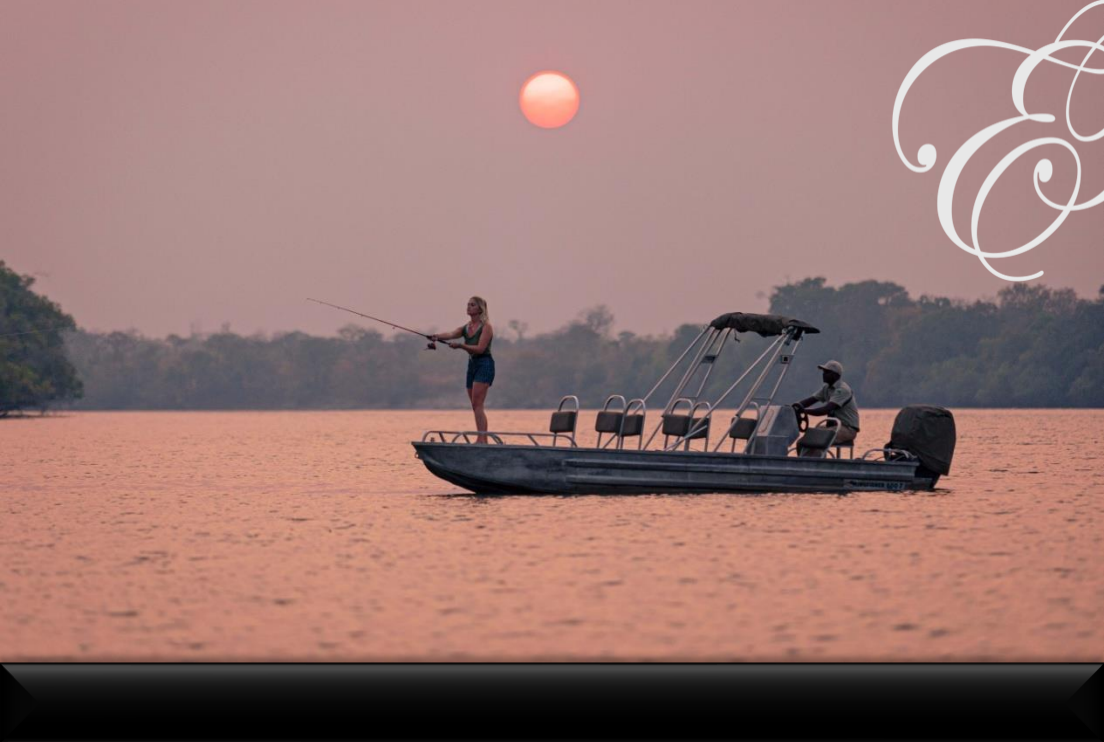
Enjoy *sunrise yoga and meditation*, followed by a full breakfast. The morning is free of any organized activity, so you can take in the beautiful surrounding of the lodge and enjoy the lodge's facilities at your own pace. Alternatively, you can take advantage of ET's complimentary *massage on the floating spa*. You may choose ONE of the following spa treatments at any time during your stay at Ila:

- Relaxing Back and Neck Massage (30 Minutes)
- Relaxing Massage (60 Minutes)
- Deep Tissue Massage (60 Minutes)
- Reflexology (45 Minutes)

For lunch, cruise quietly along the Kafue River in the *solar-powered e-Boat* and watch birds dive for fish, crocodiles bask in the sun, and elephants splash in the shallows.

Afternoon *Game Drive with sundowners in the bush*.

Dinner is served on the deck of Ila Safari Lodge.



Day 6	Sat., November 25, 2023
Hotel	Ila Safari Lodge (https://greensafaris.com/ila/)
Meal	B, L, D

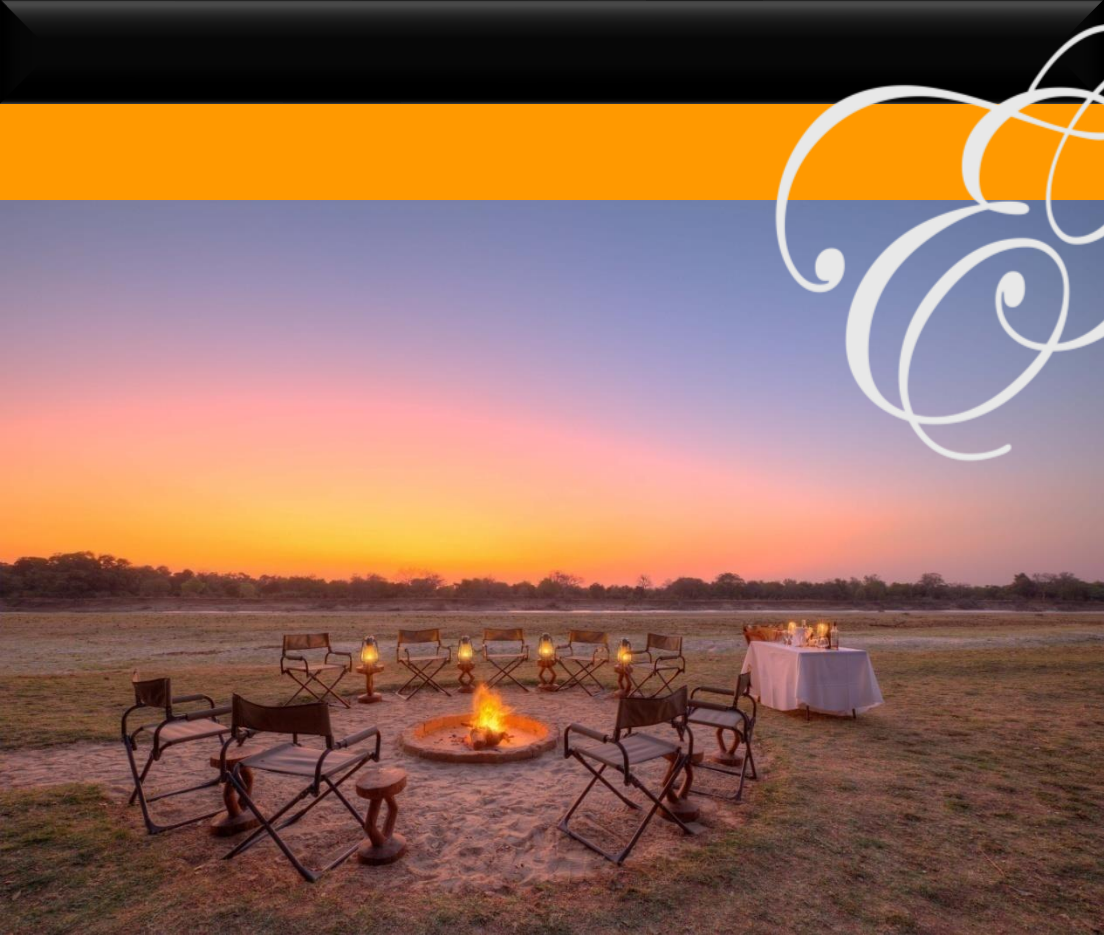
KAFUE NATIONAL PARK

Explore Kafue at dawn in the 4 x 4 *Game Drive* vehicle that will take you to less explored parts of the national park. Return to the lodge for a full breakfast after the game drive. The remainder of the morning is at leisure. If you have not taken advantage of ET's complimentary spa package, it is a good time to enjoy it today. You may choose any one of the treatments offered by the Lodge during your stay at Ila Safari Lodge.

Lunch on the deck at Ila Safari Lodge, where you will meet the *Zambian Carnivore Programme and Panthera* people, who research, manage, and protect carnivores and their habitats and establish community support for wildlife. After the conservancy visit, you will have a chance to visit the *Lukanga community* and see how much the teachers and students achieve for education in Zambia daily.

Dinner on the deck of Ila Safari Lodge.





Day 7	Sun., November 26, 2023
Hotel	Shawa Luangwa Camp (https://greensafaris.com/shawa-luangwa/)
Meal	B, L, D

SOUTH LUANGWA

After a leisurely ***Bush Breakfast*** at the lodge, you will take a chartered flight to Mfuwe Airport, where you will be transferred to Shawa Luangwa Camp in time for lunch.

This afternoon, go on a game drive in South Luangwa. Enjoy ***sundowners on the bank of the Zambezi River*** while you watch the thousands of carmine bee-eaters entering their respective nests.

Dinner on the deck at Shawa Luangwa Camp.



Day 8

Mon., November 27, 2023

Hotel

Shawa Luangwa Camp (<https://greensafaris.com/shawa-luangwa/>)

Meal

B, Lunch with a Cooking Demonstration, D

SOUTH LUANGWA

Early morning continental breakfast is served around the pool. You may opt for an energy walk, a game drive after the early morning light breakfast, or relaxing at the pool. In the late morning, enjoy brunch with a *live cooking demonstration on the open fire* presented by the Lodge's Executive Chef.

Game Drive in the afternoon or relax at the lodge with *sundowners at the Shawa firepit*.

Dinner is served on the deck at Shawa Luangwa Camp.





Day 9

Tue., November 28, 2023

Hotel
Meals

Kaya Mawa Island Lodge (<https://greensafaris.com/kaya-mawa/>)
B, Picnic Lunch on the Beach, D

LIKOMA ISLAND, MALAWI

Early morning continental breakfast is served around the pool, followed by an optional game drive. Upon return, you will depart to Likoma Island, Malawi, via Lilongwe, Malawi's capital city (you will clear the customs in Lilongwe).

Upon arrival, you will be welcomed with a **Picnic Lunch on the beach** while enjoying the gorgeous lake. The lodge's highly experienced kitchen staff will entertain you with organic food and salads from its garden.

Weather permitting, we encourage you to take advantage of Lake Malawi and explore the pristine water in an underwater adventure. You will find everything you need for snorkeling, such as goggles, snorkel, and fins, in your room.

Dinner will be served on the patio of the main building.



Day 10

Wed., November 29, 2023

Hotel

Kaya Mawa Island Lodge (<https://greensafaris.com/kaya-mawa/>)

Meals

B, L, D

LIKOMA ISLAND

Enjoy an *early morning yoga and meditation session on the beach* and a full breakfast. After breakfast, a *boat trip* from the lodge will take you to visit *Katunda*, a women-run skills project sponsored by the Lodge. Enjoy watching their skills while participating in therapeutic shopping. The remainder of the day will be spent leisurely enjoying the amazing Lake Malawi. You may take advantage of the excellent weather and water condition at Lake Malawi and explore the water and other parts of the island with a kayak, or you may prefer to paddle boarding and enjoy the cool breeze blowing off the water as you glide across the lake.

Alternatively, you may also take advantage of the ET complimentary spa package. You may choose from any One of the following treatments:

- Relaxing Back and Neck Massage (30 Minutes)
- Relaxing Massage (60 Minutes)
- Deep Tissue Massage (60 Minutes)
- Reflexology (45 Minutes)





Day 11

Thu., November 30, 2023

Hotel

Kaya Mawa Island Lodge (<https://greensafaris.com/kaya-mawa/>)

Meals

B, L, D

LIKOMA ISLAND

Today is at leisure. You will have the chance to design your very own itinerary for the day. We recommend taking a tour to explore Likoma at your own pace. (e-Bikes are available). In the center of Likoma town stands the celebrated *St. Peter's Cathedral*, a magnificent piece of architecture and one of Africa's largest churches. After two years of construction, the church held its first service in 1902, and they continue to do so today. Don't forget to climb the *Clock Tower* after you tour the cathedral. If you are lucky, you may run into a dancing competition known locally as Malipenga, which is normally held at weekends and are extremely interesting to watch.

This afternoon, participate in the sundowner cruise before dinner.

A *Farewell Dinner* is prepared for you tonight to celebrate the closing of this wonderful retreat while being entertained by the *Marimba Band*.



Day 12 **Fri., December 1, 2023**

Hotel

B

Meals

LILONGWE | END OF SERVICES

After a leisurely breakfast, you will check out of the resort and be transferred to ***Kamuzu International Airport (LLW) in Lilongwe*** for your return flight home. This ends our services.

If you wish to extend your trip, please do not hesitate to let your guide know; he/she will be happy to make all necessary arrangements for you.



HOTEL INFORMATION

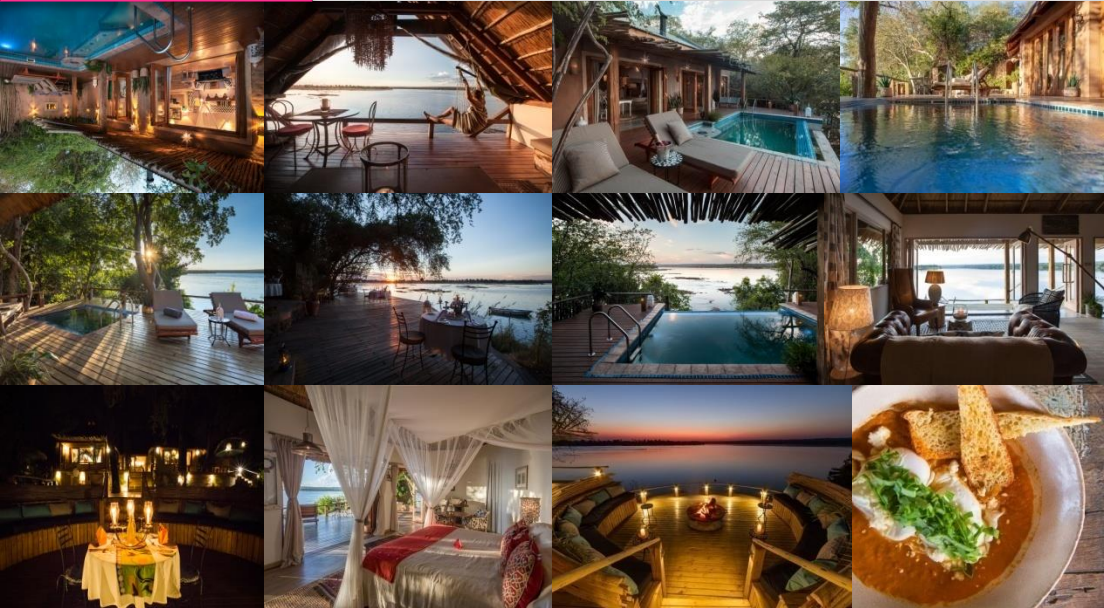


EXPEDITION TRAVELLERS



Day 1,2& 3

Tongabezi Lodge
[\(https://greensafaris.com/tongabezi/\)](https://greensafaris.com/tongabezi/)



Day 4, 5 & 6

Ila Safari Lodge (<https://greensafaris.com/ila/>)



Day 7 & 8

Shawa Luangwa Camp
[\(https://greensafaris.com/shawa-luangwa/\)](https://greensafaris.com/shawa-luangwa/)



Day 9, 10 & 11

Kaya Mawa Island Lodge
[\(https://greensafaris.com/kaya-mawa/\)](https://greensafaris.com/kaya-mawa/)



TERMS AND CONDITIONS



EXPEDITION TRAVELLERS

1.CONTRACTING PARTIES

These Terms and Conditions are legally binding between the travelers and Expedition Travellers (hereinafter referred to as “ET”).

2.ACCEPTANCE OF THESE TERMS

PLEASE NOTE: Acceptance of a quotation from ET constitutes acceptance of these Terms and Conditions that take effect as soon as ET issues you confirmation.

3.ACCOMMODATION:

All accommodation, room type(s), and specifications are as shown in the itinerary.

4.MEALS:

Meals are as shown in the itinerary.

5.TRANSFERS:

Transfers are provided on arrival and departure from airport to hotel and return where specified in the itinerary.

6.ITINERARY:

Accommodation and arranged sightseeing are subject to change at any time due to unforeseen circumstances or circumstances beyond ET’s control. Every effort will be made to operate tours as planned. Still, alterations may occur after the final itinerary has been issued. ET also reserves the right to withdraw a tour or any part of it. To make such alterations to the itinerary or the tour inclusions as it deems necessary or desirable, and to pass on to tour members any expenditures or losses caused by delays or events beyond its control. In the event of any appreciable variation in the tour price due to these circumstances, ET reserves the right to adjust to the tour costs as necessary.

7.SPECIAL REQUESTS:

At the time of booking, if there is any specific requests, they should be aware of to ET. Please note that ET will make every effort possible to secure the special requests; however, ET cannot guarantee the result.

8.TRANSPORTATION:

Transportation will be as specified in the itinerary.

9.BAGGAGE:

ET provides handling of baggage only as specified in the quotation. Weight restrictions for baggage on some routes on internal/domestic flights may apply, pre-tour documents will provide details. Baggage and personal effects are at the owner’s risk throughout the tour, and ET assumes no liability for lost or damaged baggage. ET strongly advises taking Baggage insurance. Please check with your international carrier for other baggage restrictions applicable to your international flight.

10.TAXES AND GRATUITIES:

Hotel taxes as imposed by city and state governments are included. Airport taxes are included where specified in the itinerary. Gratuities for guides, drivers, porters, camp staff, ship crew, and Tour Managers are not included. They are at the discretion of the Travelers unless otherwise stated in the itinerary.

11.EXCLUSIONS:

Unless they are expressly specified in the tour description, the cost of obtaining passports, visas, excess baggage charges, items of a personal nature such as drinks, laundry, telephone calls, fax charges are not included in the tour price.

12.PRICES & ARRANGEMENTS:

The tour price includes planning, handling, and operational charges and is quoted based on the current exchange rate and tariffs. Entrance fees as part of scheduled sightseeing tours are also included in this price. This price is subject to revision in line with significant changes in foreign currency, tariff rates, taxes etc.

13.PHOTOGRAPHY:

ET reserves the right to take photographs during any program or part thereof and use them for promotional purposes. By booking a program with ET, Travelers agree to allow their images to be used in such photographs. Travelers who prefer that their images not be used are asked to identify themselves to ET before final payment. They will be exempted from this photography waiver clause.

The use of drones for photography, or any other purpose, is forbidden on any ET trip unless permission has been previously sought, and granted by, ET.

14.DESCRPTIONS AND IMAGERY

All photographs, images, and descriptions used by ET online and within promotional documentation have been included to present a true and accurate reflection of your holiday destination. However, due to circumstances beyond our control, it is foreseeable that some destinations will change in appearance throughout the year. They appear to have varied at the time of your stay, for instance, due to adverse weather. ET will make every attempt to notify you in advance of your trip about whether such case affected the accommodation or its surroundings. If we are made aware of the same, we cannot be held liable in this regard.

15.SURVEILLANCE AND SECURITY

Please note that they may have installed surveillance cameras and security equipment in some properties. They may have the capability to monitor or record images and/or sound via remote control. If you have any concerns or issues with this, you must inform our team before your trip.

16.ACTIVITES

ET may pre-book some activities. However, should you wish to participate in other or additional activities, we strongly advise that you book in advance to avoid disappointment. Some activities, most notably boating and water-related, are subject to weather and water levels. ET cannot be held responsible should such activities be amended and/or cancelled due to such matters, over which ET has no control.

17.REGISTRATION:

A refundable deposit is required at the time of booking. The deposit amount will be specified at the time of booking; however, it usually is 10% of the tour price. The remainder of the tour cost is payable on the date shown on your quotation, typically 90 days before departure. If the reservation is made after this date, you must pay the entire tour price at the time of confirmation.

18. PAYMENT METHOD:

You may make payment with the following methods:

- Credit card
- Cheque
- Bank transfer

ET cannot guarantee that it will accept all payment methods. ET will advise of the most suitable payment method at the time of deposit. A 4.00% convenience fee will be charged if payment is made by credit card or bank transfer.

18.1 Travelers are liable for all bank and related transaction charges.

19. CANCELLATION:

All cancellations must be received in writing by your ET Tour Consultant.

19.1.1 Unless otherwise specified in your quotation, the following cancellation terms will apply to your booking:

19.1.2 Cancellations received between the date of booking and 91 days before departure will result in the loss of the deposit.

19.1.3 Cancellations received 59 - 30 days before departure will be subject to a cancellation charge of 30% of the tour price.

19.1.4 Cancellations received 29 – 14 days before departure will be subject to a cancellation charge of 50% of the tour price.

19.1.5 Cancellations received 13 - 0 days before departure will be subject to a cancellation charge of 100% of the tour price.

19.2 Cancellation of airline tickets will be subject to the refund policy of each airline. It may be greater than the percentages above, particularly when low-cost-based fares are used.

19.3 Purchasing of special event tickets is subject to the refund policy of each event. Please refer to the specific event policy for details.

19.4 ET reserves the right to charge penalties, fees, and losses incurred due to cancellation.

20. CANCELLATIONS BY ET

We reserve the right to cancel your holiday for any reason. However, we will not cancel your hotel arrangement less than 60 days before your departure date except for reasons of force majeure or failure by you to pay the final balance. Suppose you must pay the holiday price balance at least 60 days before departure. In that case, ET will treat your booking as canceled and levy the cancellation charge in clause 19. Suppose ET is obliged to cancel your holiday in any other circumstances before departure. In that case, ET will use its best endeavors to offer alternative arrangements of equivalent or very closely similar travel arrangements and a refund of the price difference; or will give you a full and prompt refund of all monies paid.

21. FORCE MAJEURE

21.1 Force majeure means unusual and unforeseeable circumstances beyond ET's control or the control of our suppliers. The consequence of which neither ET nor its suppliers could avoid even with all due care, including, but not limited to, war, the threat of war, riot, civil strife, terrorist activity (actual or threatened), industrial dispute, unavoidable technical problems with transport, machinery or equipment, power failure, changes imposed by rescheduling or cancellation of

flights by an airline, natural or nuclear disaster, fire, flood, drought, adverse weather conditions, epidemics or pandemic outbreaks of illness, and level of water in rivers, etc.

21.2 In the event of a cancellation or material alteration to the trip as a result of the circumstances as described in this clause, ET may, in their sole and absolute discretion:

a) offer the Traveler(s) alternative travel arrangements or products of comparable standard as may be appropriate in the circumstances; or

a) suppose ET does not offer alternative travel arrangements or products. In that case, ET will make a prompt proportional refund of monies paid by the Traveler.

21.3 ET may charge a reasonable fee to cover the administration costs of providing alternative travel arrangements or products.

22. CLAIMS AND REFUNDS:

Refunds are not made for any missed services except for verifiable extenuating circumstances. Please see our LIMITS ON EXPEDITION TRAVELLERS' RESPONSIBILITY clause below. For verifiable claims to be considered, they must be received in writing within 30 days of the program's termination. Any adjustment considered will be based on the actual price of the services involved and not on a per diem basis. Adjustments will not be made for unused sightseeing trips or meals. ET will not accept any liability for any claims not received within 30 days of the termination of your program. All claims for days missed while traveling should be made in writing within 30 days of the program. Any payment made by ET, either by way of refund or as the result of a successful claim, will be limited to, and not exceed, the sums retained by ET regarding the related booking.

23. LIMITS ON EXPEDITION TRAVELLERS' RESPONSIBILITY:

Expedition Travellers, its employees, shareholders, officers, directors, successors, agents, and assigns (collectively "ET"), do not own or operate any entity which is to or does provide goods or services for your trip. It purchases transportation (by aircraft, coach, train, vessel, or otherwise), hotel and other lodging accommodations, restaurants, ground handling, and other services from various independent suppliers (including, from time to time, other affiliated Expedition Travellers companies). All such persons and entities are independent contractors. As a result, ET is not liable for any negligent or willful act of any such person or entity or of any third person.

In addition and without limitation, ET is not responsible for any injury, financial or physical loss, death, inconvenience, delay, or damage to personal property in connection to the provision of any goods or services, whether resulting from but not limited to acts of God or force majeure, illness, disease, acts of war, civil unrest, insurrection or revolt, animals, strikes or other labor activities, criminal or terrorist activities of any kind, overbooking or downgrading of services, food poisoning, mechanical or other failures of aircraft or other means of transportation or for the failure of any transport mechanism to arrive or depart on time.

There are many inherent risks in adventure travel of the type involved here, leading to illness, injury, or even death. These risks are increased because these trips occur in remote locations, far from medical facilities.

If you decide to participate in any activities including, but not limited to, any excursions involving animals, riding on animals, SCUBA diving, snorkeling, boating, hot air ballooning, zip-lining, high altitude treks, climbing, quad biking, parasailing, parachuting, kayaking, white-water rafting,

primate tracking and any activity which ET considers to carry inherent risks of serious illness, injury, or death (“Activities”), then you fully understand and acknowledge that Activities carry with them various inherent risks, including serious illness, injury, or death. You take complete responsibility for your own health and safety and agree to assume all risks of injury, illness, or death, whether foreseen or unforeseen, that may befall you as a result of participating in any Activities and agree to release ET and its affiliates, their agents, employees, and representatives from any liability whatsoever related thereto, to the fullest extent permitted by law.

Further, as consideration for being permitted to participate in the Activities, you release ET, whether known or unknown, from and agree not to sue or make a claim against ET for property damage, cancellation of any activities for any reason, illness, negligent rescue operations or procedures, personal injury or death arising from your participation in the Activities, and any activity related thereto, including transportation to and from the site of the Activities, regardless of whether such property damage, illness, personal injury, or death results from the negligence of ET (but not its reckless, willful, or fraudulent conduct) and/or from any defect in the equipment. You further agree to indemnify and hold ET harmless for any claim made against ET by anyone else that a) related to your participation or b) would be subject to the above release and covenant not to sue if you had made this claim directly yourself.

24.HEALTH PRECAUTIONS:

Before travel, please consult your physician about anti-malaria precautions and other inoculations and vaccinations. Where applicable, please ensure that you carry a valid Yellow Fever certificate while traveling.

25.TRAVEL ADVISORIES/WARNINGS:

Travelers’ responsibility is to become informed about the most current travel advisories and warnings by referring to their respective government agencies. In the event of an active State Department or government agency Travel Warning against travel to specific destinations, should the Traveler still choose to travel against any travel advisory or warning, the Traveler assumes all risk of personal injury, death or property damage that may arise out of the events like those advised or warned against.

26.TRAVELERS’ REPRESENTATIONS:

If you or any member of your party has any medical problem or disability that may affect your stay, please provide us with full details before confirming your booking to advise you on the suitability of your chosen arrangements. We may require you to produce a doctor’s certificate certifying that you can participate in the tour. Acting reasonably, we will not confirm your booking if we cannot adequately accommodate the person’s needs. Suppose you did not give us full details at the time of booking. We will cancel it and impose applicable cancellation charges when we become aware of these details.

27.AIR TRANSPORTATION:

AIR TRANSPORTATION: Airlines concerned are not to be held responsible for any act, omission, or event occurring while passengers are not on board their aircraft. International air carriers are also subject to international air conventions limiting their liability. These limitations of liability are explained on the e-ticket or the reverse of the airline ticket. When issued, this constitutes the sole contract between the respective air carrier(s) and their passengers.

Airlines overbook all flights! Therefore, we recommend that you check in online as soon as the airline makes online check-in available. If you do not book online or cannot, we recommend that you arrive at the airport **3 hours** before departure. Airlines

may re-allocate seats in the event of late check-in and arrivals. ET cannot check you in, and you must ensure you are checked in within the appropriate time. ET is neither responsible nor liable if you are downgraded an airline class due to the airline overbooking the class in which you are booked. Seat reservations are at the airline's discretion and may be changed at any time without notice.

CRUISES/CHARTERS: If you are scheduled to partake in a cruise or charter, you are responsible for ensuring that you are aboard the vessel 60 minutes before the scheduled sailing time. ET is neither responsible nor liable if you fail to board the vessel in good time and suffer any loss. Furthermore, refunds will not be given for any missed days due to such failure or for clients who leave the Cruise prematurely.

28.PASSPORTS & VISAS

Please note that passport holders are responsible for obtaining the required documentation applicable for entry. Please also note that passports must be valid for at least six (6) months after the completion of your journey and should have sufficient blank pages for visas and immigration stamps. ET can only be held responsible if you are allowed entry to a country due to non-compliance with these requirements. Should you require specific information ahead of travel, please consult the travel advice produced by the government of your home jurisdiction and that of the government that issued the passport and/or visa you intend to travel under.

29.TRAVELLING WITH CHILDREN

We recommend that if you are traveling with a child that does not share your surname, to minimize the possibility of disruption to your travel plans, you travel with documentation that proves your relationship to the child and that proves you have permission to travel with them. ET can only be held responsible if you or any member of your traveling party are allowed entry to a country due to non-compliance with these requirements. Should you require further specific information ahead of travel, please consult the travel advice produced by the government of your home jurisdiction and that of the government that issued the passport and/or visa you intend to travel under.

Due to some of the excursions and activities involved in ET trips, minimum age requirements are in place at some destinations. Some accommodations require children below a certain age to share a room with an adult. Such circumstances vary and will be specified within your itinerary, ahead of travel, and at the time of booking.

30.TRAVEL INSURANCE:

ET requires all clients to take out comprehensive travel insurance before the travel date. This insurance should cover cancellation and curtailment, all medical expenses, including evacuation/repatriation, **COVID-19 coverage**, personal baggage, personal liability, death, and permanent disability, and travel document insurance.

31.ARBITRATION AGREEMENT:

Any claim arising out of or relating to these Terms and Conditions, to the Limits on ET's Responsibility clause, to the brochure, to any information relating in any way to the trip, to the trip itself, or any products or services related to the trip, shall be settled in the first instance by binding arbitration in the applicable legal forum as detailed in clause 32 of these Terms and Conditions. In lieu of a personal appearance at arbitration, the arbitration may be conducted by telephonic means. Arbitration is the exclusive forum in the first instance for dispute resolution and except as otherwise provided by statute, each party shall bear its costs and expenses and an equal share of the arbitrator and administrative fees.

32. APPLICABLE LAW AND FORUM:

This agreement shall be construed, interpreted, enforced by, and governed by the laws of the State of New York, The United States of America. It is agreed between ET and the Travelers that all lawsuits against ET arising under, in connection with, or incidental to the tour shall be filed, if at all, in the courts of Queens County, State of New York, The United States of America to the exclusion of the courts of or in any other country.



EXPEDITION TRAVELLERS



EXPEDITION TRAVELLERS

Experiencing World's Most Endearing Moments!

<https://expeditiontravellers.com/>

info@expeditiontravellers.com



In Partnership With

Green Safaris

