

NAMIBIA

LUXURIOUS

ESCAPES

11-DAY | 10-NIGHT



EXPEDITION TRAVELLERS

N A M I B I A



January – May

June – October

2023

WELCOME TO NAMIBIA



Namibia, a country in southwest Africa, is home to some of the most unique landscapes on earth. The Namibian landscape is both unforgiving and awe-inspiring. Visiting Namibia is a bucket list experience everyone should have tried at least once, if not repeatedly.

Discover Namibia at its compelling; hiking on the tallest and oldest dunes in the world allows you to appreciate its desolate beauty and vitality. The wildlife in Etosha National Park and the otherworldly landscapes, including Sossusvlei, Deadvlei, Skitzkoppe are all unique experiences you are not likely to see anywhere else in the world. The introduction of the San Bushman and the nomadic Himba tribes is a cultural experience you will learn from this tour.

Sandwich Harbor, where the desert meets the ocean, is a natural wonder one must witness. Surfing down the dunes to the lagoon where flocks of pink flamingos congregate is an adventure. Seeing, listening to, and smelling the 200,000-plus seal colony at Cape Cross Seal Preservation is a fun and exciting encounter with the wildlife at a close range. It is also part of the world-renowned Skeleton Coast National Park where you will also see many shipwrecks.

Namibia is a vast country with unique characters that will liberate you from nature. Welcome to Namibia!



DATES & PRICE

January – May From N\$120,200 | US\$6,700

June – October From N\$138,250 | US\$7,700

Prices are per person based on double occupancy.

GROUP SIZE

Limited to 12 people

INCLUDED WITH EVERY EXPEDITION TRAVELLERS TOUR

- English-Speaking Local Guides / Driver
- Hand-Selected Luxury Accommodations (where available) (Double Occupancy)
- Airport meet and greet with private luxury 4x4 vehicle
- Round-Trip Airport Transfers
- All Meals (breakfast, lunch & dinner)
- All park entrance fees, VATs, and All Gratuities Except for Guide/Driver
- Local Bottled water
- Hot Beverage onboard the vehicle throughout the entire journey
- Portage at the airport
- 24/7 ET On-Call Support
- Guaranteed Departure with Just Two Guests

EXCLUSIONS

- Roundtrip International flight to and from Windhoek, Namibia
- Visa application and fees
- Cancellation / Travel Insurance and/or Medical Insurance with COVID-19 coverage
- Any meals, transfers, or tours that are not mentioned in the itinerary
- Alcoholic beverages and soft drinks, unless it is mentioned in the itinerary
- Early check-in and late check-out
- Any item of a purely personal nature, such as laundry and telephone bills
- Gratuities for Driver/Guide



PLEASE NOTE ...

- Quotation is based on 12 people traveling on a Double Occupancy basis
- Accommodation is subject to availability, and reservations have not been made unless otherwise stated
- Visa fees and entry/exit requirements are subject to change at short notice, which may result in additional fees or new visa applications to be covered by the guest
- A non-refundable deposit of 10% is required at the time of booking, with the remaining balance due 60 days before departure; if the reservation is made within 60 days of departure, the total costs must be paid at the time of confirmation
- Payments may be made by bank transfer or credit card. A credit card service charge of 4% will be added to the total cost
- Bank transfer payments must be confirmed by email on the date payment is made, and travelers are liable for all bank (and related) transaction charges
- If you are traveling with more than one valid passport, please present the passport that corresponds with the details listed on any pre-arranged visa documents (E-Visas, Visa Stamps, or Visa Approval Letters) while checking in at the airline counter before departure. Expedition Travellers Namibia does not take responsibility for any issues that may occur as a result of failing to present the correct passport; any fee or fine incurred as a result must be settled directly by the guest

Gratuities are at the sole discretion of each client. However, in Namibia, it is customary to offer gratuities to guides and drivers as a form of appreciation for the services provided. Recommended tipping amounts are provided below. Upon advance request, ET can add a pre-arranged gratuity package as a part of the total trip cost, and ET distributes the gratuities on your behalf, ensuring that service providers receive a fair and equal amount at all times throughout your journey.

Guide/Driver	N\$200/day/per person
Porter	N\$50/ Check-in or Check-out
Restaurant Wait Staff	N\$50 per meal

ITINERARY



EXPEDITION TRAVELLERS
N A M I B I A



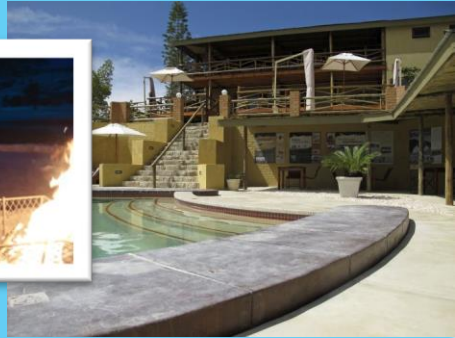
Day 1

Meeting Point	Hosea Kutako International Airport Arrival Hall – Please look for Expedition Travellers Sign
Meeting Time	8:30 am on Arrival Date
Hotel	Agama Lodge (http://www.agamalodge.com/) or similar
Meal	Packed Breakfast, L & D
Activities	At Leisure
Drive Time	Approximate 3 Hours 40 Minutes

ARRIVE WINDHOEK | WINDHOEK –SESRIEM / SOSSUSVLEI

Upon arrival at Hosea Kutako International Airport (WDH), Expedition Travelers representatives will meet and greet you at the arrival hall. Please look for Expedition Travellers Sign at the arrival hall. The group meeting time is at 8:30 am on the arrival date. Once all luggage is collected, you will board our luxury 4 x 4 safari vehicle and begin your journey. The drive from Windhoek to Sesriem / Sossusvlei is approximately 3 Hours and 40 Minutes.

Upon arrival at the Agama Lodge, you will have the rest of the afternoon at leisure, allowing you to enjoy this beautiful campground. Please take advantage of your room's rooftop bedding, where you can lie on the bed in the open air, admire the beautiful night sky, and, if you are lucky, the Milkyway right from your roof.





Day 2

Hotel	Agama Lodge (http://www.agamalodge.com/) or similar
Meal	B, Packed Lunch & D
Activities	Deadvlei Dune 45 Big Daddy

SESRIEM / SOSSUSVLEI

After breakfast, we will leave for Deadvlei before the temperature gets too hot. To get to Deadvlei, you get to hike the red sand for approximately one and one-half km to reach the white clay pan of Deadvlei where ancient trees are still standing. Many of the trees are more than 500 years old, with a few are much older than that. The burned trees, white clay pan, and red dunes make the visit to Deadvlei a once-in-your-lifetime experience.

Packed lunch will be served at the rest area before we board our 4x4 vehicle to Dune 45 and Big Daddy, the tallest dune in the world. Big Daddy is the tallest dune in Sossusvlei area. It is measured at 325 meters it dwarfs the other dunes. The climb to the top of Big Daddy takes about 1 hour and is hard work as you keep slipping back in the sand. It is recommended that you do it in bare feet. You will have plenty of time to climb the dunes and enjoy the view from the top if you decide to hike up.

We will return to our luxury lodge for dinner before sunset. You will have the rest of the evening at leisure. Please enjoy the facilities and services the lodge has to offer.





EXPEDITION TRAVELLERS
NAMIBIA





EXPEDITION TRAVELLERS
NAMIBIA



Day 3

Hotel	Strand Hotel Swakopmund (https://www.strandhotelswakopmund.com/) or similar
Meal	B, 2-Course Lunch & 3-Course Dinner
Activities	Afternoon Sandwich Harbor Dune Drive Flamingo Lagoon Shipwrecks
Driving Time	Approximately 4 Hours

SESRIEM / SOSSUSYLEI – SWAKOPMUND - WALVIS BAY

After breakfast, we will check out of Amaga Lodge and be on our way to Swakopmund. Along the way, you will see many wildlife and impressive landscapes. The estimated drive time is approximately 4 hours.

Lunch will be served at the beautiful Strand Hotel where you will stay for two nights.

After lunch, you will be picked up and transferred to Sandwich Harbor to witness one of the greatest natural wonders in the world. Sandwich Harbor is in the Namib-Naukluft National Park, and is one of Namibia's most unique and dramatic sites. In here, some of the world's highest dunes descent into the Atlantic Ocean to form a picturesque lagoon.

The Sandwich Harbor 4 x 4 adventure will begin with an off-road drive on the beach along the Atlantic Ocean, then you will be taken to the top of the dune to have a panorama view of the amazing Namib Desert and the Walvis Bay Lagoon. Going down the dune is a thrilling experience as you will be driven on some of the highest dunes in the Namib Desert. The tour will end at the Walvis Bay Lagoon where flocks of pink Flamingos congregate. Enjoy a picnic at the Walvis Bay Lagoon!

Your guide will pick you up at Walvis Bay Lagoon and continue the tour to visit several shipwreck sites until sunset.

Tonight, enjoy a 3-course dinner at the hotel. The remainder of the night is at leisure.



Day 4

Hotel	Strand Hotel Swakopmund (https://www.strandhotelswakopmund.com/) or similar
Meal	B, Street Food Tasting & 3-Course Dinner
Activities	Swakopmund Cultural Tour – Shipwreck – Cape Cross Seal Reserve

SWAKOPMUND– CAPE CROSS - SWAKOPMUND

This morning, enjoy your breakfast at the hotel, then we will head out for a short city cultural tour of Swakopmund. Established by German colonists in 1892, the city's colonial landmarks include the Swakopmund Lighthouse and the Mole, an old sea wall. This tour will also visit the Open Market in the township. Your guide will take you to the streets of Mondesa and visit community arts and crafts projects. You will also learn the click language from the Damara tribe.

After the tour, we will return to the hotel for lunch and a short break before heading out again to Cape Cross Seal Reserve.

Along the way to Cape Cross, we will visit more shipwreck sites. The Cape Cross Seal Reserve is in a remote headland on the Skeleton Coast and is home to one of the largest Cape Fur Seal colonies in the world. The reserve is a protected area owned by the Namibian government. Approximately 100,000 seals inhabit Cape Cross. It is also the largest Cape Fur Seal breeding colony in the world. Visitors often lose themselves in this noisy hubbub, viewing the captivating interactions of the seals from the extensive walkway. The encounter with the seals will be a lifelong memory you won't forget.



EXPEDITION TRAVELLERS
N A M I B I A



Day 5

Hotel	Erindi Old Trade Lodge (https://erindi.com/)
Meal	B, L& D
Activities	Afternoon Game Drive Afternoon Tea & Cake
Drive Time	Approximately 3 Hours and 30 Minutes

SWAKOPMUND – ERINDI PRIVATE GAME RESERVE

We begin our wildlife program with Erindi Private Game Reserve. After breakfast, we check out of the beautiful Strand Hotel and head to Erindi.

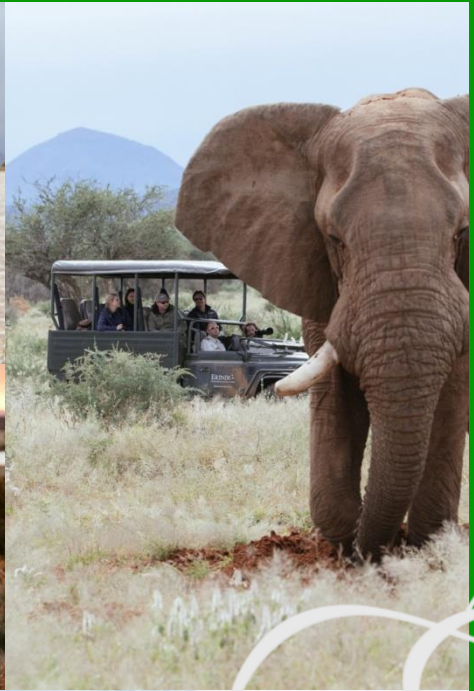
Erindi Private Game Reserve is a protected reserve in central Namibia. With 70,719 hectares of pristine wilderness, the reserve has undertaken an immense task to pursue conservation initiatives in the name of eco-friendly tourism, while empowering its local communities.

We will arrive Erindi's Old Trade Lodge in time for lunch. Please feel free to explore the lodge and its facilities. You will have time to rest or walk around the site before going out for your first game drive.

During the game drive, you will be accompanied by a knowledgeable guide in the comfort of an open 4x4 vehicle. Drinks and snacks are provided on the drive, so sit back, relax and feel Africa.

Upon return to the lodge, we have prepared a special Afternoon Tea & Cake for you to enjoy before dinner.

Tonight, you are treated to a culinary adventure, combining regional African cuisine with the many cooking styles left behind by early explorers. The rest of the evening is at leisure.





Day 6

Hotel	Okaukuejo Resort (https://www.nwr.com.na/resorts/okaukuejo-resort/)
Meal	B, Packed Lunch & D
Activities	Sunrise and Morning Game Drive Night Walk near the floodlit waterhole
Drive Time	Approximately 4 hours

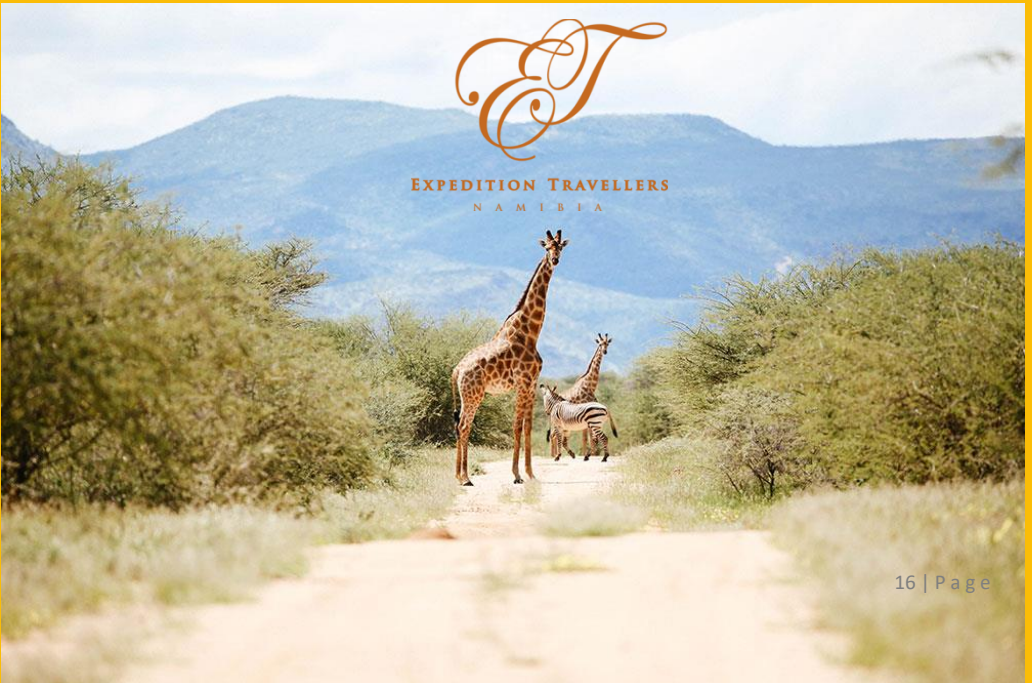
ERINDI PRIVATE GAME RESERVE – ETOSHA NATIONAL PARK (OKAUKUEJO)

A very good morning today; we rose early today for the Sunrise and Morning Game Drive. Animals are most active in the early morning hours. We will be accompanied by an experienced guide in an open-air vehicle for the game drive. If lucky, we will run into the Big Fives during the drive.

We return to the lodge for a full breakfast before departing for our next destination, Okaukuejo. The scenic drive to Okaukuejo from Erindi Private Game Reserve is approximately 4 hours. We will have packed lunches and enjoy the lunch picnic-style midway to Okaukuejo.

Upon check-in at the Okaukuejo Resort, you will have the rest of the afternoon at leisure. Please feel free to walk around the resort property. You will see many animals around the property.

At night, after dinner, we invite you to walk to the resort's floodlit waterhole, where you will see many different animals in action. Please don't forget to bring your camera with you.



EXPEDITION TRAVELLERS
NAMIBIA

Day 7

Hotel	Fiume Lodge (https://fiume-lodge.com/)
Meal	B, 2-Course Lunch & 3-Course Dinner
Activities	Sunrise and Morning Game Drive Afternoon visit to the San Bushman Village Evening with campfire
Drive Time	Approximately 5 hours

ETOSHA NATIONAL PARK (OKAUKUEJO) - GROOTFONTEIN

After breakfast, we depart Okaukuejo Resort for Grootfontein along Etosha Pan. On the way in, we will make several stops for you to observe and take pictures of the animals. The scenic game drive to Grootfontein is approximately 5 hours.

Etosha Pan is a large endorheic salt pan, forming part of the Cuvelai-Etosha Basin in the north of Namibia. It is a hollow in the ground in which water may collect or in which a deposit of salt remains after the water has evaporated. At 130 km long, and up to 50 km wide, Etosha Pan is the largest salt pan in Africa and is the park's most distinctive and dramatic feature, visible from space. In the wet season, the pan attracts flamingos, pelicans, and other birds, as well as rhinos and impalas.

Lunch will be served at Fiume Lodge, where you will stay for the night.

This afternoon, we will visit the San Bushman Village in Grootfontein. The San people, or Bushmen, are members of various Khoe, Tuu, or Kx'a-speaking indigenous hunter-gatherer cultures that are the first cultures of Southern Africa. Its territories span Botswana, Namibia, Angola, Zambia, Zimbabwe, Lesotho, and South Africa. There are about 100,000+/- San people left in the world. San Bushmen have a reputation as trackers and hunters. They move around from place to place, following a nomadic way of life.

San Bushmen are one of the oldest human groups on the planet, and you might expect their genes to reflect humanity's most ancestral state. The visit to the San Village will allow us to learn about their culture, skills, and medicinal knowledge of plants, among other things.

Tonight, relax around the campfire and enjoy the night sky and the wonderful experience with each other.





Day 8

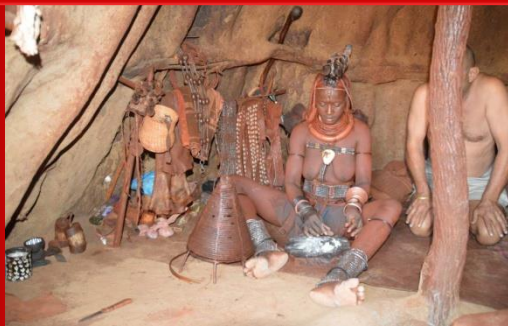
Hotel	OppinKoppi Rest Camp (https://www.oppi-koppi-kamanjab.com/)
Meal	B, Lunch at OutjoBakkerij in Outjo& 3-Course Dinner
Activities	Afternoon visit to the HimbaOrphan Village Project
Drive Time	Approximately 5 hours and 20 minutes

GROOTFONTEIN - KAMANJAB

After breakfast, we depart Fiume Lodge for Kamanjab along the southern edge of the Etosha National Park going west. On the way in, we will stop in Outjo for a quick lunch at a local bakery, OutjoBakkerij. The scenic game drive to Kamanjab is approximately 5 hours and 20 minutes.

After checking into OppinKoppi Rest Camp, where you will spend the night, we will regroup to visit the Himba Village.

Himba is one of the last tribes in Africa (besides the San Bushmen) living strictly within their traditions. During this visit, you will participate in the milking ceremony, and smoke bath, and learn about Himba's holy fire, ancestors, and herbal medicine. You will also learn about the jewelry and hairstyles to imitate the status of each tribe member and their close relationship with nature, their cattle, and their children. This visit will give you an in-depth insight into the life and ways of the last traditional tribe in Namibia. It is also an amazing photographic opportunity to document the Himba way of life.





EXPEDITION TRAVELLERS
NAMIBIA

Day 9

Hotel	Spitzkoppen Lodge (https://www.spitzkoppenlodge.com/)
Meal	B, 2-Course Lunch & 3-Course Dinner
Activities	Peet Alberts Rock Engravings Afternoon Sundowner Picnic
Drive Time	Approximately 4 hours and 20 minutes

KAMANJAB - SPITZKOPPE

After breakfast, we depart Oppi-Koppi Rest Camp for Spitzkoppe, but first, we will take a detour to visit the Peet Alberts Rock Engravings. The rock engravings were carved by San Bushmen thousands of years ago. It recorded their way of life through the drawings of animals and their hunting activities. The giraffe is the most frequently depicted animal at Peet Alberts Koppie; images also display various other animals, such as elephants or oryx antelope.

Upon arrival at the ultra-luxury Spitzkoppen Lodge, you will check into your luxury tent, where you will stay for two nights. Spitzkoppen Lodge is built within a highly environmentally sensitive area. The 15 one-of-a-kind chalets and the public areas are split in two to minimize the visual impact on the environment, creating an easterly view (sunrise) for the Chalets and a westerly view (sunset) for the Dining area. The structures are linked with elevated walkways, all constructed to be wheelchair friendly. The tented roof shapes simulate the surrounding rock formations and soften the square building plan form. Staying at Spitzkoppen Lodge is a once-in-your-lifetime experience.

After lunch, enjoy a few hours of free time on your own to soak in the environment and the sounding mountains. You may also elect to relax at your chalet, sipping tea/coffee on your private deck, and do absolutely nothing.

In the late afternoon, we regroup for a sundowner picnic where soft drinks, beers, cider, and wine are provided with snacks at a sundowner spot.

Enjoy a 3-course dinner with the beautiful sunset at the restaurant tent. Please remember to bring your camera with you.



Day 10

Hotel	Spitzkoppen Lodge (https://www.spitzkoppenlodge.com/)
Meal	B, 2-Course Lunch & 3-Course Dinner
Activities	Late morning tour to the Small Bushman's Paradise, the Zebra Pool, Rock Arch and the Golden Snake Painting with picnic lunch

SPITZKOPPE

As we wind down the tour, we are taking a slower pace to allow you to re-energize yourself. After a delicious breakfast, you are invited to take your time and enjoy the morning with friends at the restaurant or the public area, taking in the view and the environment. In the late morning, we will regroup for a tour visiting the Small Bushman's Paradise, the Zebra Pool, the famous Rock arch, and the Golden Snake Painting, with a picnic lunch.

Upon return to the lodge, you will have the rest of the date at leisure. Please feel free to walk around the property. If you wish to revisit some of the viewpoints, please inform your Guide, and he will be happy to take you.

A special Farewell Dinner is prepared for you tonight to celebrate the closing of this tour and the wonderful time we had together.





Day 11

Meal	B, L
Activity	Windhoek City Tour
Drive Time	Approximately 4 hours

SPITZKOPPEN – WINDHOEK | END OF SERVICES

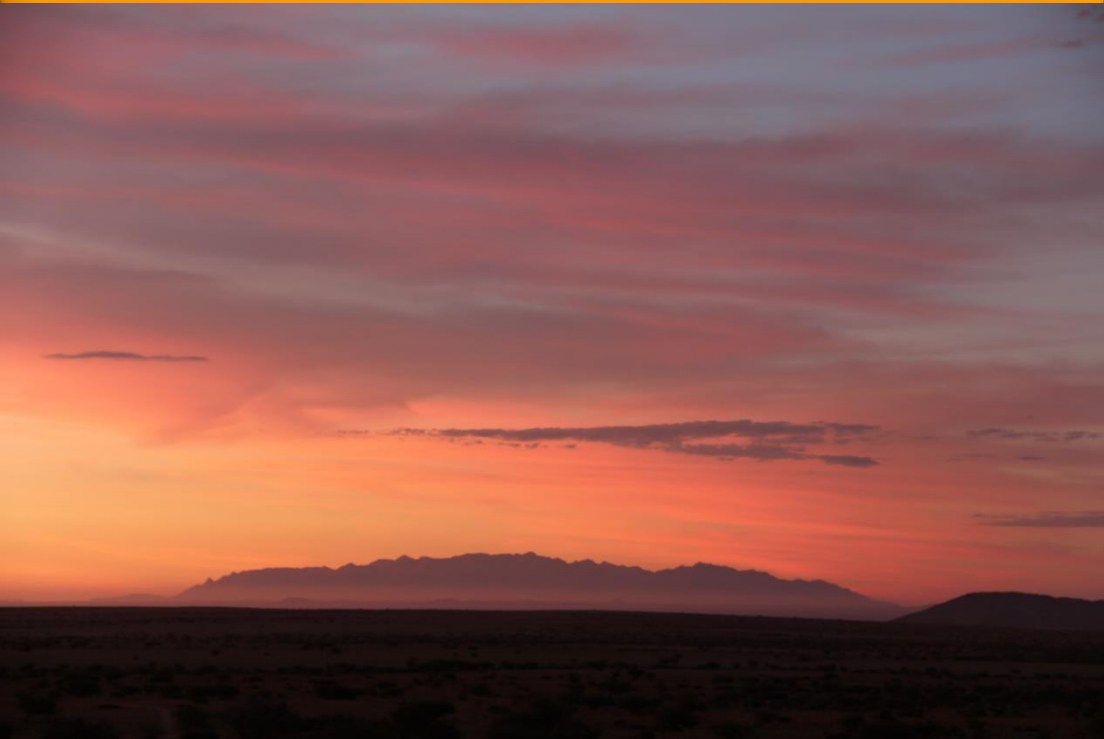
This morning, we will have a leisure breakfast at the beautiful Spitzkoppen Lodge before we depart for our return trip to Windhoek. The scenic drive back to Windhoek will take approximately 4 hours.

Upon return to Windhoek, we will first stop at a local restaurant for lunch, then go on a City Tour of Windhoek, visiting important landmarks before we head to Windhoek Hosea Kutako International Airport for your return flight home. This concludes our services.

Please let your guide know if you wish to prolong your stay in Windhoek. Expedition Travellers Namibia will be happy to assist you if you need assistance finding a suitable lodging facility and transportation or post-workshop tours.



HOTEL INFORMATION



Day 1 & 2

Agama Lodge (<http://www.agamalodge.com/>)



Day 3 & 4

Strand Hotel Swakopmund (<https://www.strandhotelswakopmund.com/>)



Day 5

Erindi Old Trade Lodge (<https://erindi.com/>)



Day 6

Okaukuejo Resort (<https://www.nwr.com.na/resorts/okaukuejo-resort/>)



Day 7

Fiume Lodge (<https://fiume-lodge.com/>)



Day 8

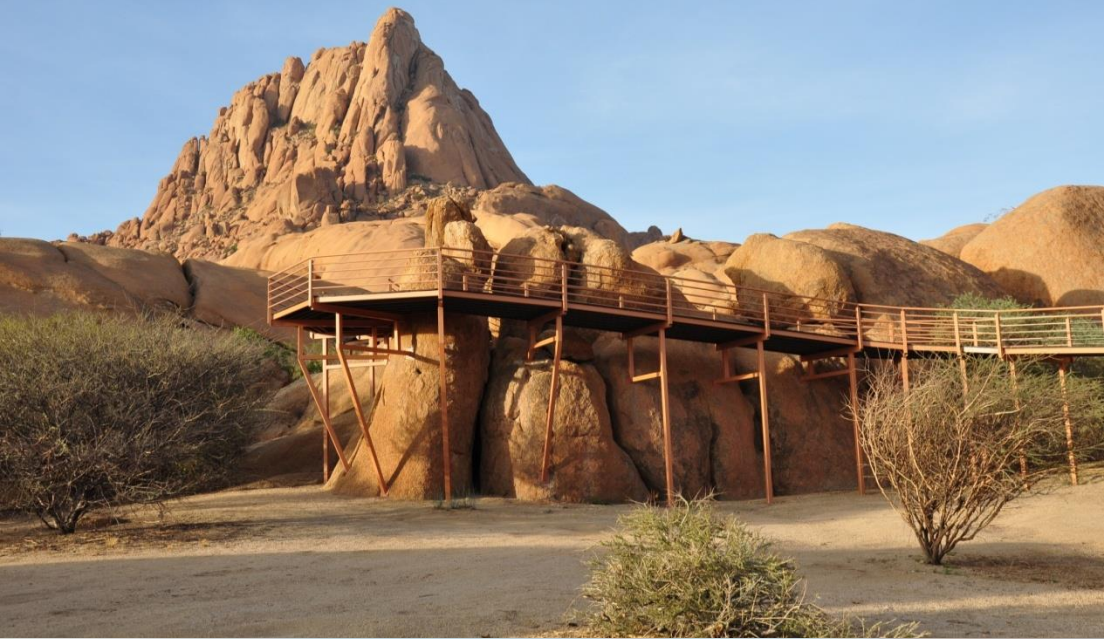
OppinKoppi Rest Camp (<https://www.oppi-koppi-kamanjab.com/>)



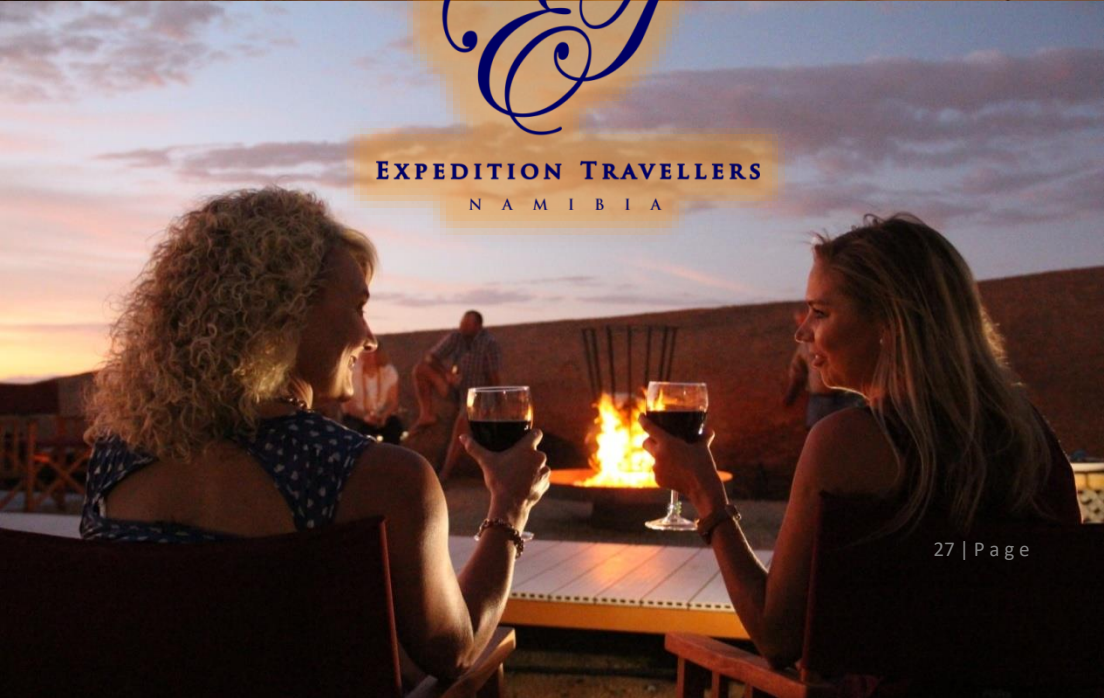
Day 9 & 10

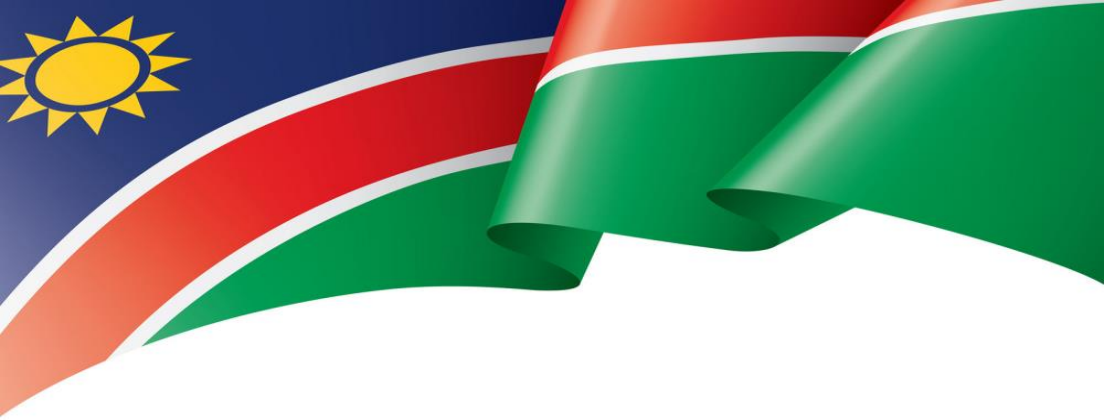
Spitzkoppen Lodge (<https://www.spitzkoppenlodge.com/>)





EXPEDITION TRAVELLERS
NAMIBIA





TERMS AND CONDITIONS



EXPEDITION TRAVELLERS

N A M I B I A

1.CONTRACTING PARTIES

These Terms and Conditions are legally binding between the travelers and Expedition Travellers (hereinafter referred to as “ET”).

2.ACCEPTANCE OF THESE TERMS

PLEASE NOTE: Acceptance of a quotation from ET constitutes acceptance of these Terms and Conditions that take effect as soon as ET issues you confirmation.

3.ACCOMMODATION:

All accommodation, room type(s), and specifications are as shown in the itinerary.

4.MEALS:

Meals are as shown in the itinerary.

5.TRANSFERS:

Transfers are provided on arrival and departure from airport to hotel and return where specified in the itinerary.

6.ITINERARY:

Accommodation and arranged sightseeing are subject to change at any time due to unforeseen circumstances or circumstances beyond ET’s control. Every effort will be made to operate tours as planned. Still, alterations may occur after the final itinerary has been issued. ET also reserves the right to withdraw a tour or any part of it. To make such alterations to the itinerary or the tour inclusions as it deems necessary or desirable, and to pass on to tour members any expenditures or losses caused by delays or events beyond its control. In the event of any appreciable variation in the tour price due to these circumstances, ET reserves the right to adjust to the tour costs as necessary.

7.SPECIAL REQUESTS:

At the time of booking, if there is any specific requests, they should be aware of to ET. Please note that ET will make every effort possible to secure the special requests; however, ET cannot guarantee the result.

8.TRANSPORTATION:

Transportation will be as specified in the itinerary.

9.BAGGAGE:

ET provides handling of baggage only as specified in the quotation. Weight restrictions for baggage on some routes on internal/domestic flights may apply, pre-tour documents will provide details. Baggage and personal effects are at the owner’s risk throughout the tour, and ET assumes no liability for lost or damaged baggage. ET strongly advises taking Baggage insurance. Please check with your international carrier for other baggage restrictions applicable to your international flight.

10.TAXES AND GRATUITIES:

Hotel taxes as imposed by city and state governments are included. Airport taxes are included where specified in the itinerary. Gratuities for guides, drivers, porters, camp staff, ship crew, and Tour Managers are not included. They are at the discretion of the Travelers unless otherwise stated in the itinerary.

11.EXCLUSIONS:

Unless they are expressly specified in the tour description, the cost of obtaining passports, visas, excess baggage charges, items of a personal nature such as drinks, laundry, telephone calls, fax charges are not included in the tour price.

12.PRICES & ARRANGEMENTS:

The tour price includes planning, handling, and operational charges and is quoted based on the current exchange rate and tariffs. Entrance fees as part of scheduled sightseeing tours are also included in this price. This price is subject to revision in line with significant changes in foreign currency, tariff rates, taxes etc.

13.PHOTOGRAPHY:

ET reserves the right to take photographs during any program or part thereof and use them for promotional purposes. By booking a program with ET, Travelers agree to allow their images to be used in such photographs. Travelers who prefer that their images not be used are asked to identify themselves to ET before final payment. They will be exempted from this photography waiver clause.

The use of drones for photography, or any other purpose, is forbidden on any ET trip unless permission has been previously sought, and granted by, ET.

14.DESCRPTIONS AND IMAGERY

All photographs, images, and descriptions used by ET online and within promotional documentation have been included to present a true and accurate reflection of your holiday destination. However, due to circumstances beyond our control, it is foreseeable that some destinations will change in appearance throughout the year. They appear to have varied at the time of your stay, for instance, due to adverse weather. ET will make every attempt to notify you in advance of your trip about whether such case affected the accommodation or its surroundings. If we are made aware of the same, we cannot be held liable in this regard.

15.SURVEILLANCE AND SECURITY

Please note that they may have installed surveillance cameras and security equipment in some properties. They may have the capability to monitor or record images and/or sound via remote control. If you have any concerns or issues with this, you must inform our team before your trip.

16.ACTIVITES

ET may pre-book some activities. However, should you wish to participate in other or additional activities, we strongly advise that you book in advance to avoid disappointment. Some activities, most notably boating and water-related, are subject to weather and water levels. ET cannot be held responsible should such activities be amended and/or cancelled due to such matters, over which ET has no control.

17.REGISTRATION:

A refundable deposit is required at the time of booking. The deposit amount will be specified at the time of booking; however, it usually is 10% of the tour price. The remainder of the tour cost is payable on the date shown on your quotation, typically 90 days before departure. If the reservation is made after this date, you must pay the entire tour price at the time of confirmation.

18. PAYMENT METHOD:

You may make payment with the following methods:

- Credit card
- Cheque
- Bank transfer

ET cannot guarantee that it will accept all payment methods. ET will advise of the most suitable payment method at the time of deposit.

18.1 Travelers are liable for all bank and related transaction charges.

19. CANCELLATION:

All cancellations must be received in writing by your ET Tour Consultant.

19.1.1 Unless otherwise specified in your quotation, the following cancellation terms will apply to your booking:

19.1.2 Cancellations received between the date of booking and 91 days before departure will result in the loss of the deposit.

19.1.3 Cancellations received 59 - 30 days before departure will be subject to a cancellation charge of 30% of the tour price.

19.1.4 Cancellations received 29 – 14 days before departure will be subject to a cancellation charge of 50% of the tour price.

19.1.5 Cancellations received 13 - 0 days before departure will be subject to a cancellation charge of 100% of the tour price.

19.2 Cancellation of airline tickets will be subject to the refund policy of each airline. It may be greater than the percentages above, particularly when low cost/net based fares are used.

19.3 The purchase of special event tickets is subject to the refund policy of each event. Please refer to the specific event policy for details.

19.4 ET reserves the right to charge penalties, fees, and losses incurred due to cancellation.

20. CANCELLATION BY ET

We reserve the right in any circumstances to cancel your holiday for any reason. However, we will not cancel your hotel arrangement less than 60 days before your departure date, except for reasons of force majeure or failure by you to pay the final balance. Suppose you fail to pay the balance of the holiday price at least 60 days before departure. In that case, ET will treat your booking as cancelled and levy the cancellation charges set out in clause 19. Suppose ET is obliged to cancel your holiday in any other circumstances before departure. In that case, ET will use its best endeavours to offer alternative arrangements of equivalent or very closely similar travel arrangements and a refund of the price difference; or will give you a full and prompt refund of all monies paid.

21. FORCE MAJEURE

21.1 Force majeure means unusual and unforeseeable circumstances beyond ET's control or the control of our suppliers. The consequence of which neither ET nor its suppliers could avoid even with all due care, including, but not limited to, war, the threat of war, riot, civil strife, terrorist activity (actual or threatened), industrial dispute, unavoidable technical problems with transport, machinery or equipment, power failure, changes imposed by rescheduling or cancellation of

flights by an airline, natural or nuclear disaster, fire, flood, drought, adverse weather conditions, epidemics or pandemic outbreaks of illness and level of water in rivers, etc.

21.2 In the event of a cancellation or material alteration to the trip as a result of the circumstances as described in this clause, ET may in their sole and absolute discretion:

a) offer the Traveler(s) alternative travel arrangements or products of comparable standard as may be appropriate in the circumstances; or

a) suppose alternative travel arrangements or products are not offered by ET. In that case, ET will make a prompt proportional refund of monies paid by the Traveler.

21.3 ET may charge a reasonable fee to cover the administration costs associated with providing alternative travel arrangements or products.

22. CLAIMS AND REFUNDS:

Refunds are not made for any missed services, except for verifiable extenuating circumstances.

Please see our LIMITS ON EXPEDITION TRAVELLERS' RESPONSIBILITY clause below. For verifiable claims to be considered, they must be received in writing within 30 days of the program's termination. Any adjustment considered will be based on the actual price of the services involved and not on a per diem basis. Adjustments will not be made for unused sightseeing trips or meals. ET will not accept any liability for any claims that are not received within 30 days of the termination of your program. All claims for days missed while travelling should be made in writing within 30 days of the program. Any payment made by ET, either by way of refund or as the result of a successful claim, will be limited to, and not exceed, the sums retained by ET in respect of the related booking.

23. LIMITS ON EXPEDITION TRAVELLERS' RESPONSIBILITY:

Expedition Travellers, its employees, shareholders, officers, directors, successors, agents and assigns (collectively "ET"), does not own or operate any entity which is to or does provide goods or services for your trip. It purchases transportation (by aircraft, coach, train, vessel or otherwise), hotel, and other lodging accommodations, restaurant, ground handling and other services from various independent suppliers (including from time to time other affiliated Expedition Travellers companies). All such persons and entities are independent contractors. As a result, ET is not liable for any negligent or willful act of any such person or entity or of any third person.

In addition and without limitation, ET is not responsible for any injury, financial or physical loss, death, inconvenience, delay or damage to personal property in connection to the provision of any goods or services whether resulting from but not limited to acts of God or force majeure, illness, disease, acts of war, civil unrest, insurrection or revolt, animals, strikes or other labour activities, criminal or terrorist activities of any kind, overbooking or downgrading of services, food poisoning, mechanical or other failures of aircraft or other means of transportation or for the failure of any transport mechanism to arrive or depart on time.

There are many inherent risks in adventure travel of the type involved here, leading to illness, injury, or even death. These risks are increased because these trips take place in remote locations, far from medical facilities.

If you decide to participate in any activities including, but not limited to, any excursions involving animals, riding on animals, SCUBA diving, snorkeling, boating, hot air ballooning, zip-lining, high altitude treks, climbing, quad biking, parasailing, parachuting, kayaking, white-water rafting,

primate tracking and any activity which ET considers to carry inherent risks of serious illness, injury or death (“Activities”), then you fully understand and acknowledge that Activities carry with them various inherent risks, including serious illness, injury or death and you take complete responsibility for your own health and safety and agree to assume all risks of injury, illness or death, whether foreseen or unforeseen that may befall you as a result of participating in any Activities and agree to release ET and its affiliates, their agents, employees and representatives from any liability whatsoever related thereto, to the fullest extent permitted by law.

Further, as consideration for being permitted to participate in the Activities, you release ET, whether known or unknown, from, and agree not to sue or make claim against ET for property damage, cancellation of any activities for any reason, illness, negligent rescue operations or procedures, personal injury or death arising from your participation in the Activities, and any activity related thereto, including transportation to and from the site of the Activities, regardless of whether such property damage, illness, personal injury, or death results from the negligence of ET (but not its reckless, wilful, or fraudulent conduct) and/or from any defect in the equipment. You further agree to indemnify and hold ET harmless for any claim made against ET by anyone else which a) related to your participation or b) would be subject to the above release and covenant not to sue if you had made this claim directly yourself.

24.HEALTH PRECAUTIONS:

Please ensure that you consult your physician about anti-malaria precautions and other inoculations and vaccinations before travel. Where applicable, please ensure that while travelling you carry a valid Yellow Fever certificate.

25.TRAVEL ADVISORIES/WARNINGS:

Traveler’s responsibility is to become informed about the most current travel advisories and warnings by referring to their respective government agencies. In the event of an active State Department or government agency Travel Warning against travel to specific destinations, should the Traveler still choose to travel against any travel advisory or warning, the Traveler assumes all risk of personal injury, death or property damage that may arise out of the events like those advised or warned against.

26.TRAVELERS’ REPRESENTATIONS:

If you or any member of your party has any medical problem or disability that may affect your stay, please provide us with full details before confirming your booking to try to advise you as to the suitability of your chosen arrangements. We may require you to produce a doctor’s certificate certifying that you are fit to participate in the tour. Acting reasonably, if we cannot adequately accommodate the person’s need concerned, we will not confirm your booking. Suppose you did not give us full details at the time of booking. We will cancel it and impose applicable cancellation charges when we become aware of these details.

27.AIR TRANSPORTATION:

AIR TRANSPORTATION: Airlines concerned are not to be held responsible for any act, omission or event occurring while passengers are not on board their aircraft. International air carriers are also subject to international air conventions limiting their liability. These limitations of liability are explained on the e-ticket or on the reverse of the airline ticket and when issued, this constitutes the sole contract between the respective air carrier(s) and their passengers.

Airlines overbook all flights! We, therefore, recommend that you check-in online as soon as online check-in is made available by the airline. If you do not book online or for any reason are unable to do so, we recommend that you arrive at the airport **3 hours** before departure. Airlines

may re-allocate seats in the event of late check-in and arrivals. ET cannot check you in, and it is your responsibility to ensure you are checked in within the appropriate time. ET is neither responsible nor liable if you are downgraded an airline class due to the airline overbooking the class in which you are booked. Seat reservations are at the discretion of the airline and may be changed at any time without notice.

CRUISES/CHARTERS: If you are scheduled to partake in a cruise or charter, you are responsible for ensuring that you are aboard the vessel no later than 60 minutes before the scheduled sailing time. ET is neither responsible nor liable if you fail to board the vessel in good time and suffer any loss as a result. Furthermore, refunds will not be given for any days that are missed due to such failure, or for clients who choose to leave the Cruise prematurely for any reason.

28.PASSPORT & VISAS

Please note that passport holders are responsible for obtaining the required documentation applicable for entry. Please note also that passports must be valid for at least six (6) months after completion of your journey, and should have sufficient blank pages for visas and immigration stamps. ET cannot be held responsible should you be denied entry to a country due to non-compliance with these requirements. Should you require specific information ahead of travel, please consult the travel advice produced by the government of your home jurisdiction, as well as that of the government who issued the passport and/or visa you intend to travel under.

29.TRAVELLING WITH CHILDREN

We recommend that if you are traveling with a child that does not share your surname, to minimise the possibility of disruption to your travel plans, you travel with documentation that proves your relationship to the child and documentation that proves you have permission to travel with them. ET cannot be held responsible should you or any member of your travelling party be denied entry to a country due to non-compliance with these requirements. Should you require further specific information ahead of travel, please consult the travel advice produced by the government of your home jurisdiction, as well as that of the government who issued the passport and/or visa you intend to travel under.

Due to some of the excursions and activities involved in ET trips, minimum age requirements are in place at some destinations. Additionally, some accommodations require that children below a certain age share a room with an adult. Such circumstances vary and will be specified within your itinerary, ahead of travel, and at the time of booking.

30.TRAVEL INSURANCE:

ET requires all clients take out comprehensive travel insurance before date of travel. This insurance should cover cancellation and curtailment, all medical expenses including evacuation/repatriation, **COVID-19 coverage**, personal baggage, personal liability, death and permanent disability and travel document insurance.

31.ARBITRATION AGREEMENT:

Any claim arising out of or relating to these Terms and Conditions, to the Limits on ET's Responsibility clause, to the brochure, to any information relating in any way to the trip, to the trip itself, or any products or services related to the trip, shall be settled in the first instance by binding arbitration in the applicable legal forum as detailed in clause 32 of these Terms and Conditions. In lieu of a personal appearance at arbitration the arbitration may be conducted by telephonic means. Arbitration is the exclusive forum in the first instance for dispute resolution and except as otherwise provided by statute, each party shall bear its own costs and expenses and an equal share of the arbitrator and administrative fees.

32. APPLICABLE LAW AND FORUM:

This agreement shall be construed, interpreted, and enforced by, and shall be governed by the laws of the State of New York, The United States of America. It is agreed between ET and the Travelers that all lawsuits against ET arising under, in connection with, or incidental to the tour shall be filed, if at all, in the courts of Queens County, State of New York, The United States of America to the exclusion of the courts of or in any other country.



EXPEDITION TRAVELLERS

N A M I B I A



EXPEDITION TRAVELLERS

N A M I B I A

Experiencing World's Most Endearing Moments!

<https://expeditiontravellers.com/>



For more information or to book, Contact :

reservation@expeditiontravellers.com

© Expedition Travellers Namibia, an Expedition TravellersGroup company.



EXPEDITION TRAVELLERS

